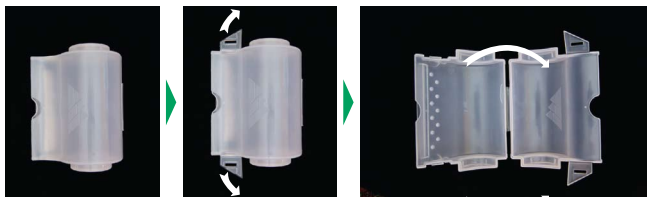


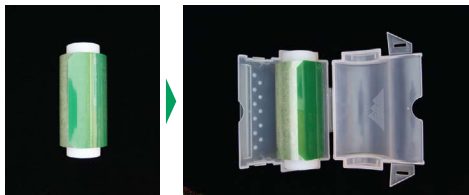
SealMate™: Instructions for Use

Loading the Dispenser

1. Remove the dispenser from its package, release the two clasps at the sides of the dispensing bill, and open the dispenser by rotating the top section back via the living hinge.



2. Remove one roll of sealing film from its package and place the roll in the dispenser so that the film peels from the top of the roll and the adhesive side of the film is oriented downward.



3. Pull the leading edge of the film even with the edge of the dispensing bill, or slightly beyond. Then close the dispenser and secure the two clasps.



U.S. and international patents pending.

View the video demonstration at
www.excelscientific.com/sealmate-demo/

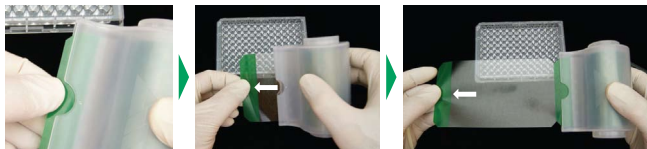


"SealMate" is a trademark of Excel Scientific, Inc.

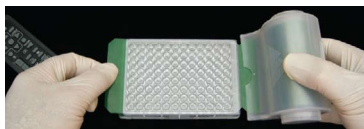
SealMate™: Instructions for Use

Operation

4. Grasp the dispenser lightly with one hand. Using the thumb and index finger of your other hand, grasp the leading edge of the sealing film (non-adhesive colored band) at the indent in the dispenser bill. Pull the film from the dispenser until one sheet of film has been extracted and the next colored band appears.



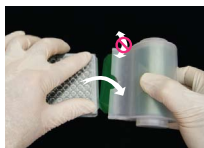
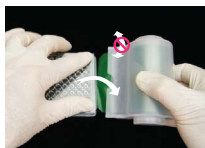
5. A brake mechanism in the dispenser hub prevents the film from extending farther than desired. To activate the brake, grasp more tightly with the hand holding the body of the dispenser.



6. Holding the film lightly, so as not to stretch the film and introduce creases, lower the film and position it on the microplate.

7. Hold the film securely against the microplate by placing the thumb and index finger of the hand that pulled the film on the corners of the plate closest to the dispenser.

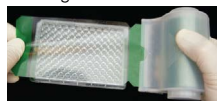
8. Grasp the dispenser body tightly to maintain the braking action, and tear the film at the perforation by pulling lightly and rotating the dispenser in the plane of the microplate surface. (Do not pull up or down on the film.)



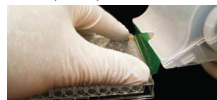
9. Seal the film securely on the microplate by pressing with the bottom of the round portion of the dispenser. The dispenser should now be ready for the next film application.



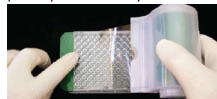
Don't pull too tight, creating wrinkles.



Don't pull up or down.



Don't attach the film to the plate prematurely.



Don'ts