



# DIGIVAC Model 450

## INSTRUCTION MANUAL

Digital Vacuum Gauge and Vacuum Level Controllers  
*YOU MUST READ THIS MANUAL BEFORE USE*



**The DigiVac Company**

1020 Campus Drive West Morganville, NJ 07751

Email: [sales@digivac.com](mailto:sales@digivac.com) (732) 765-0900 (732) 765-1800 FAX

[www.Digivac.com](http://www.Digivac.com)

# CONTENTS

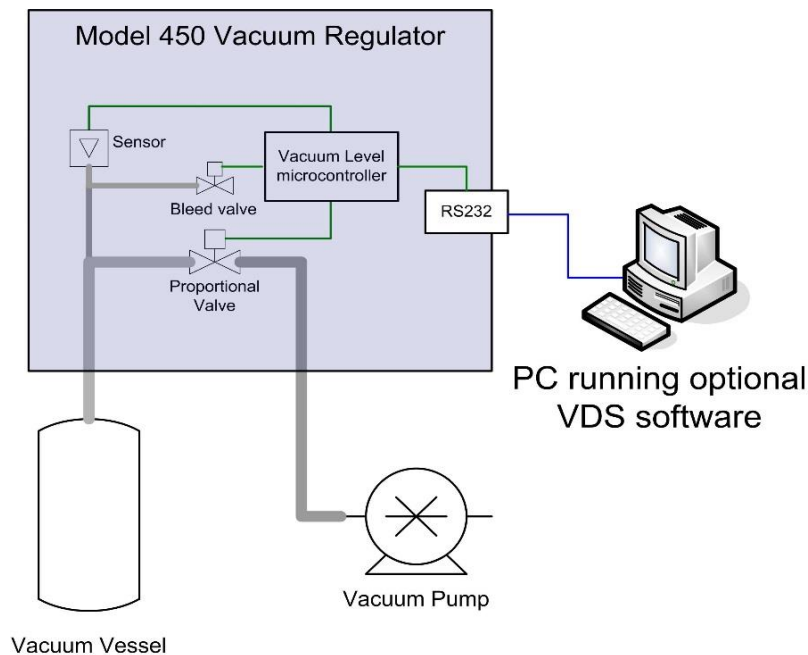
- 1.0 Description and Principle of Operation
- 2.0 Construction
- 3.0 Unpacking and Inspection
- 4.0 Installation
- 5.0 Operation
  - 5.1 Switch Functions
  - 5.2 Software
- 6.0 Servicing, Maintenance and Calibration
  - 6.1 Factory Repair and Calibration
- 7.0 Notes on Calibration
- 8.0 Understanding Torr
- 9.0 Accessories and Modifications
- 10.0 Attachments, Illustrations and Specifications
- 11.0 Terms and Conditions

## 1.0 DESCRIPTION AND PRINCIPLE OF OPERATION

The DIGIVAC Model 450 Digital Vacuum Gauge is a self-contained, vacuum level control unit for maintaining pressures between 2 and 760Torr. This instrument works in conjunction with a precision isolated integrated circuit pressure transducer, and a large bore proportional solenoid valve to measure and control vacuum.

It has a proportional valve that allows the controller to make precise changes in vacuum flow to achieve a very stable vacuum level. The unit has a bleed valve that adds bleed control from atmospheric pressure, or customer supplied gas.

The DigiVac Model 450 operates when the valve opens proportionally from 0 to 100%. The voltage to the valve is controlled by using a PWM (FET transistor pulse width modulating) technique, which allows precise positioning of the valve plunger without developing heat or EMI (electromagnetic interface).



## 2.0 CONSTRUCTION

The Model 450 is housed in a vinyl clad metal enclosure. The valves and plumbing are mechanically fastened to the Aluminum plate base. The circuitry and wiring all terminate on a control board, near the display,

It has full manual control available via a dial on the front panel, or can be controlled remotely via RS232.

The Model 450 includes an easy to read, back-lit LCD display with an intuitive readout of the current vacuum level set point, current vacuum level, valve duty cycle, and mode.

## 3.0 UNPACKING AND INSPECTION

After the DIGIVAC Model 450 is received, it should be carefully unpacked and inspected for damage during shipment and for completeness. In the event of a loss shipment, a claim should immediately be made to the common carrier as applicable.

**Each Model 450 should come with:**

A vacuum gauge controller
An isolated vacuum sensor (internal) or optional outboard capacitance manometer
An AC adapter that runs on 100-230VAC, 50/60 Hz with line cord
Pre-tested under actual vacuum against a NIST standard

## 4.0 INSTALLATION

Position the unit as desired and make the following connections:

- Connect the power supply to AC power 115 to 230 volts 50/60/400 Hz.
- Connect the power jack to the rear of the unit
- Connect the Right Hose connection (as seen from the rear of the unit) to the vacuum pump
- Connect the Left Hose connection (as seen from the rear of the unit) to the system
- Connect RS232 (if applicable)

Rack Installation:

The unit may be mounted in a standard rack with tray fittings available from VWR Scientific and other vendors.

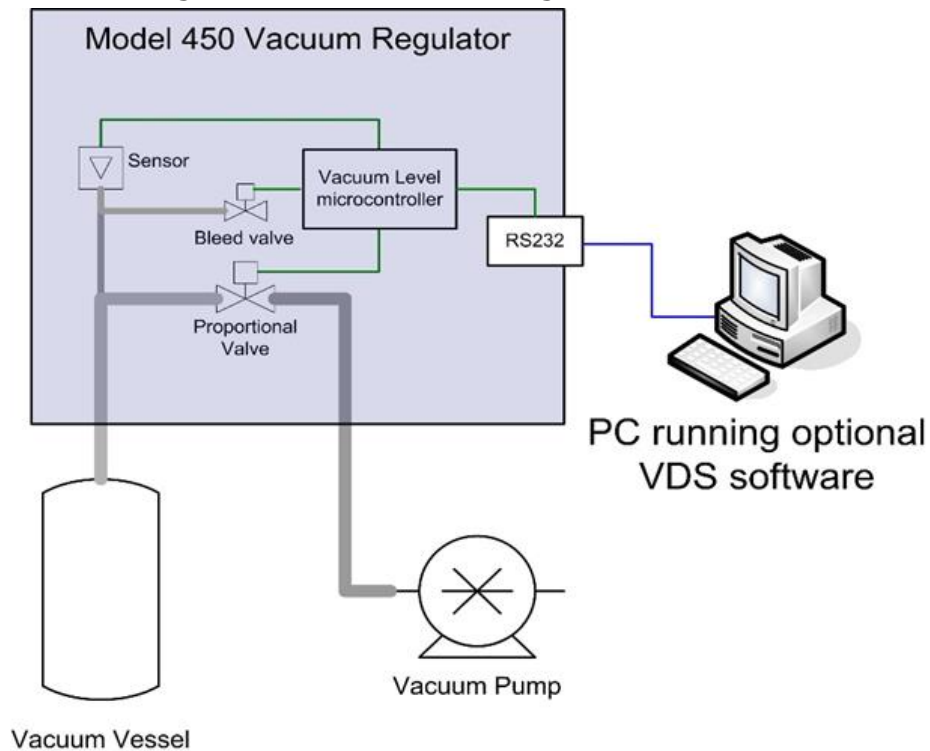


## 5.0 OPERATION

After installation, the instrument is ready for immediate operation.

To operate:

- Plumb the unit in between vacuum pump and vessel
- Attach source of bleed air, (if nothing is attached, atmospheric air will be used)
- Place both front panel toggle switches in the center position
- Using the set point adjustment knob, set the desired system pressure
- Move the right switch to the up (regulate) position



The unit will now read:

- The first line shows the current pressure and the set point
- The second line shows the percent the valve is open, followed by mode of operation

760 Torr	758 Set
48% pwm	loc or RMT

## 5.1 SWITCH FUNCTIONS

### Controls

Loc (local control)	Vacuum control will proceed according to the mode of operation selected on front panel switches
RMT (remote control)	Ignores front panel local control settings, controlled remotely via RS232. Remains in RMT until released by a Loc command (or power cycle)

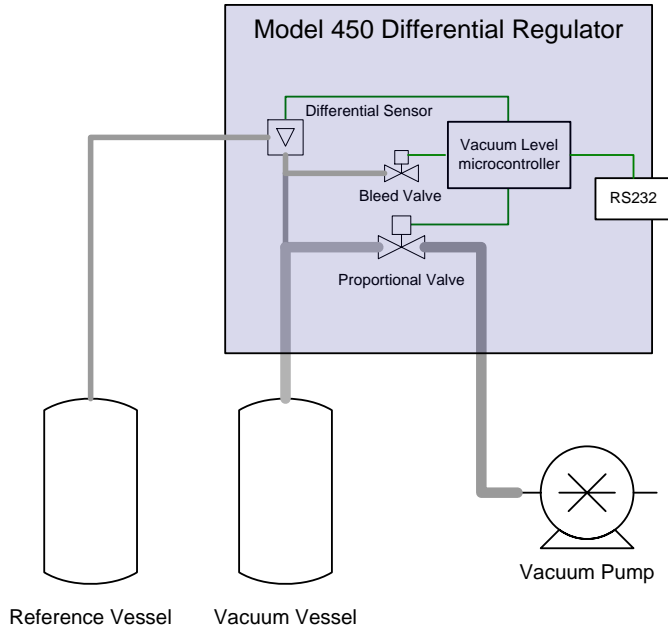
### Modes of Operation (right switch)

Regulation (up position)	regulates vacuum according to selected set point
Off (center position)	standby mode
Full (down position)	opens valve fully regardless of selected set point setting

### Purge Control (left switch)

Vent ("up" position)	Placing the switch in the "up" position causes the vent valve to open relieving system pressure
Purge Switch	The center position is standby mode (no venting)
Ref	Used for custom features, such as the differential control feature

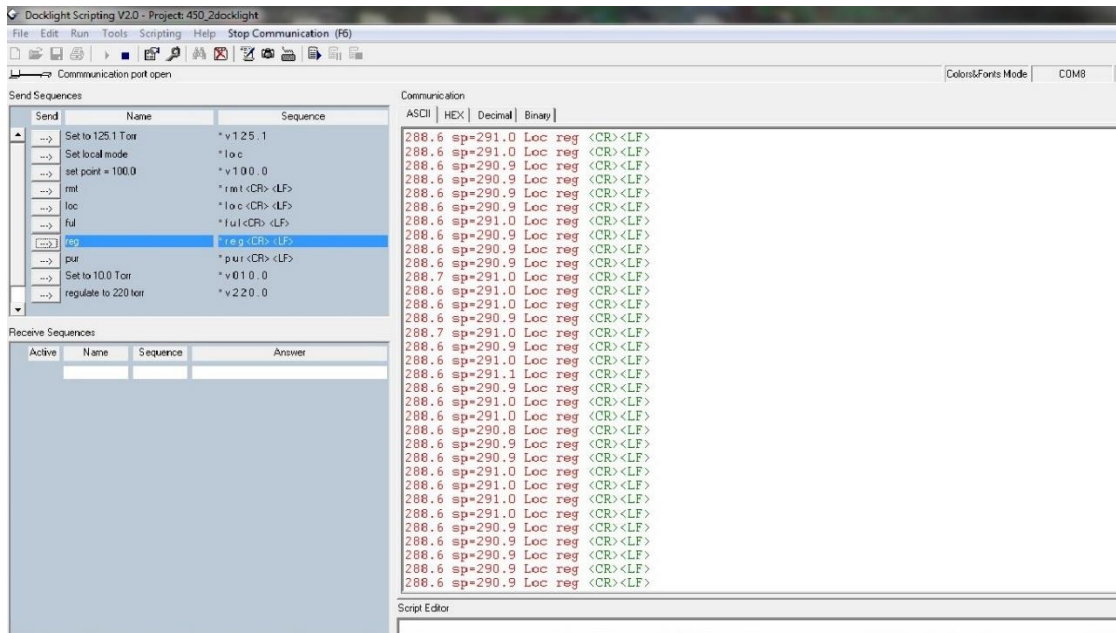




In the differential configuration, when the unit is in “REF” mode it will regulate the pressure in the vacuum vessel to the same pressure in the reference vessel

## 5.2 REMOTE CONTROL VIA RS232

The model 450 can be controlled via RS232 by a simple command set, using a terminal program such as Putty (<http://www.putty.org/>) or Docklight (<http://docklight.de/>). A docklight command set project is available for download at <http://www.digivac.com/product/model-450/>. Serial protocol is 9600-8-N-1. The m450 transmits data at approximately 1 line per second.





450 commands:

\*rmt <cr> <lf> enables remote mode  
\*loc <cr> <lf> return to local mode  
\*ful <cr> <lf> full on (valve 100% open)  
\*off <cr> <lf> off (valve 0% open, closed)  
\*reg <cr> <lf> regulate  
\*pur <cr> <lf> purge (vent)  
\*v123.0 <cr> <lf> set vacuum to 123 Torr

(Note the set point must be sent in a format of XXX.X, although tenths are not indicated on local display.)

## **6.0 SERVICING AND MAINTENANCE**

### **MAINTENANCE**

Your vacuum controller should give you many years of trouble free service. There are no regularly scheduled maintenance intervals. If consistent accuracy is required, it is recommended that the instrument and power supply tube be returned for a yearly calibration check.

### **6.1 FACTORY REPAIR AND CALIBRATION**

The 450 vacuum control is designed to provide years of trouble-free service, and the liberal internal use of plug-in components make it easily repairable. No field servicing of the unit is recommended, but factory servicing and calibration are available at a nominal cost and fast turn-around times.

## **7.0 NOTES ON CALIBRATION**

Each DigiVac vacuum controller is calibrated and ready for immediate use. Consult factory if the calibration is in question.

## 8.0 UNDERSTANDING TORR

The DIGIVAC vacuum instrument and many similar instruments are calibrated in microns or "milliTorr." It is appropriate to discuss what microns are and to relate microns to other measures of pressure and vacuum. Microns are not really a measure of vacuum at all, but rather of absolute pressure. It will be recalled that the pressure of the atmosphere is 14.696 or approximately 14.7 pounds per square inch at sea level. This pressure is due to the weight of all of the air in the earth's atmosphere above any particular square inch. This 14.696 psi is equivalent to the pressure produced by a mercury column of approximately 29.92 inches high or .76 meters (about 3/4 of a yard) or 760 millimeters of mercury. Atmospheric pressure varies greatly with altitude. It decreases approximately 1 inch of mercury per thousand feet of altitude. It also varies widely with local weather conditions. (Variations of one half inch in a single day are common.)

The word vacuum means pressure lower than atmospheric or "suction," but, in describing negative pressure, the atmosphere is only a satisfactory reference if we are dealing with values of vacuum down to about 27 inches of mercury. Below that, it is much more useful to talk in terms of absolute pressure, starting from absolute zero.

The Model 450 measures from 2–760 Torr. One TORR, a commonly used unit, is an absolute pressure of one millimeter of mercury. A milliTorr is equal to one thousandth of a TORR. A MICRON is the same as a milliTorr.

## 9.0 ACCESSORIES AND MODIFICATIONS

### Optional Features:

Options	Description
NISTCal	Calibration of a DIGIVAC vacuum gauge against a NIST traceable standard with data
SS	Makes vacuum path mostly composed of stainless steel to reduce effects of a corrosive environment
Differential	Gives the ability to control a differential vacuum level from -3.0 to +3.0 PSI

Please consult the product guide and website for the latest available.

## 10.0 SPECIFICATIONS

Range	1-760
Units	Torr
Bleed Interface	3/32 inch Silicon I.D Hose
Vac Interface	3/8 inch I.D. Hose
Sensor	Isolated Transducer or capacitance manometer
Display	Blue LCD Character 16x2
Dimensions	2.75" high, 5.5" wide, 7.5" deep
Power	100-240VAC 50/60 Hz CE rated

### INSTRUMENT ACCURACY

0 to 20 Torr	+/- 1 Torr
21 to 760 Torr	+/- 2 Torr

For repair or recalibration, return gauges to:

The DigiVac Company

105B Church Street

Matawan, NJ 07747

Ph: 732.765.0900

Fax: 732.765.1800

E-mail: Direct from our website [www.DigiVac.com](http://www.DigiVac.com)

The DigiVac Company manufactures a complete line of vacuum gauges and process computers. Contact us or your distributor if you wish for further information.

See [www.DigiVac.com](http://www.DigiVac.com) for our latest offerings

# 11.0 TERMS AND CONDITIONS

## TERMS OF USE, LIMITED WARRANTY & LIABILITY WAIVER

THE DIGIVAC COMPANY ("DigiVac") offers all of its products with the following terms and conditions and notices as follows. By accepting and/or using a DigiVac product, you hereby acknowledge and agree to the following terms and conditions, and acceptance of these terms and conditions are a condition precedent to any purchase/sale agreement between you and DigiVac.

**Exclusive Obligation:** The DigiVac product you are purchasing has been designed for a specific use within a set of suitable operating conditions, as set forth in its User Manual, or as indicated otherwise by DigiVac. Any use of the DigiVac Product for any purpose or under any conditions, other than those specified, shall render any limited warranty void, and shall expressly invalidate any liability of DigiVac for damages as a result of such misuse. **User limitation:** You may not modify, copy, distribute, transmit, display, perform, reproduce, publish, license, create derivative works from, transfer, or sell, any information, software, products or services obtained from or created by DigiVac to any third party, without the express written consent of DigiVac to do otherwise. Any violation of this provision shall give rise to an indemnification of DigiVac by you, for any third party claims arising out of such violation.

**THIRTY (30) DAY LIMITED Warranty:** All DigiVac products are warranted against any manufactured defect for a period of thirty (30) days from date of purchase, unless such product is a custom-work for you and not a standard DigiVac product. Any product qualifying as a custom-work shall not be warranted against any defects for any purpose, and your acceptance of such custom-work shall relieve DigiVac of any liability for any purpose. **WITH THE EXCEPTION OF THE LIMITED WARRANTY ABOVE, YOU AGREE ANY DIGIVAC PRODUCT IS PROVIDED AS IS, EXCLUSIVE OF ANY WARRANTY, INCLUDING, WITHOUT LIMITATION, ANY IMPLIED WARRANTY OF MERCHANTABILITY, FITNESS FOR A PARTICULAR PURPOSE, NON-INFRINGEMENT, OR ANY OTHER WARRANTY, EXPRESSED OR IMPLIED.** **Limitation Of Liability:** You agree and acknowledge, DigiVac shall have no liability to you whatsoever for any direct, indirect, punitive, incidental, special consequential damages arising out of or connected with the use or misuse of its products. In particular, given the nature of DigiVac products, you agree and acknowledge, under no circumstances whatsoever shall DigiVac be liable to you for any consequential damages for damage to any non-DigiVac product or service, arising from the failure, use or misuse of a DigiVac product, including, but not limited to, any vacuum system, engine, vehicle, factory, or the like. In the event, a court of law with proper jurisdiction finds DigiVac liable to you for any purpose, you agree and acknowledge DigiVac's maximum liability shall not exceed the purchase price of one unit of product giving rise to such liability, or \$250.00, whichever is greater. **Entire Obligation:** These terms and conditions express the entire obligation of DigiVac with respect to its products. If any part of these terms and conditions are deemed void, invalid, unenforceable or illegal, including, but not limited to, the warranty disclaimers, liability disclaimers and liability limitations set forth above, then the unenforceable clause or sentence may be disregarded with the remainder of these terms and conditions valid and enforced. In the event the unenforceable clause or sentence leaves a void in these terms and conditions, a provision closely matching the intent of the unenforceable provision should be deemed inherent within these terms and conditions, slightly modified to render such provision valid and enforceable. **General:** These terms and conditions are governed by the laws of the State of New Jersey, USA. You hereby consent to the exclusive jurisdiction and venue of the Courts of New Jersey, in all disputes arising out of or relating to the use of this product. Use of this product is unauthorized in any jurisdiction that does not give effect to all provisions of these terms and conditions. **Modification of Terms and Conditions:** DigiVac reserves the right to change the terms, conditions, and notices under which their products are offered.

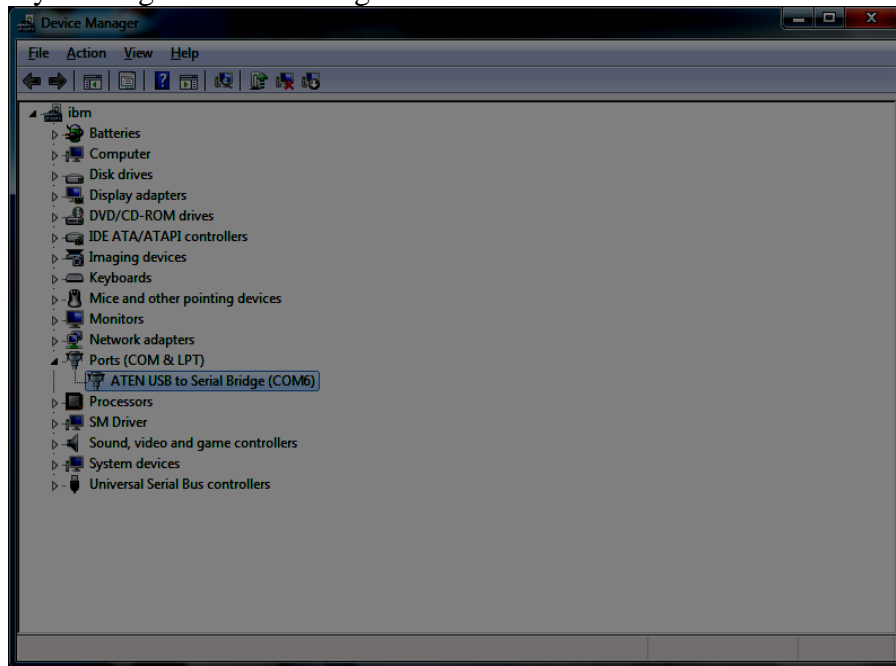
# 450 Notes

for machine to machine interaction via RS232 for version 8J22, 12i10

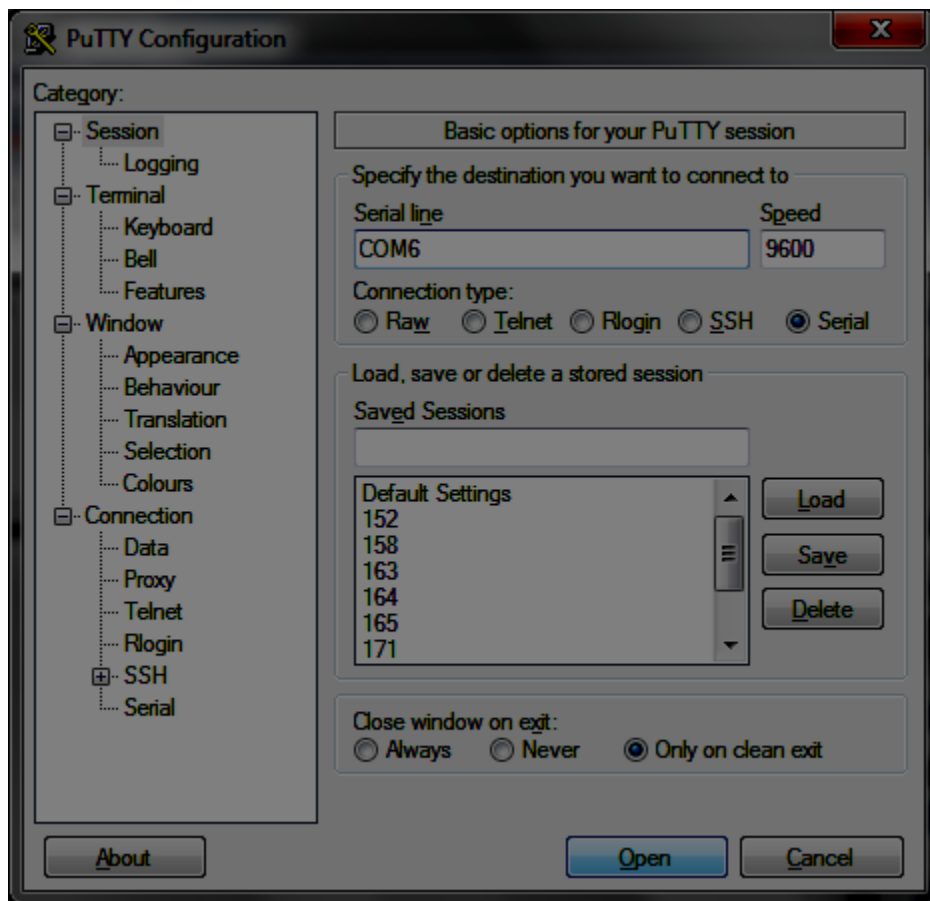
Use terminal program (like 'PUTTY', past commands into terminal window)

- \*rmt <cr> <lf> enables remote mode
- \*loc <cr> <lf> return to local mode
- \*ful <cr> <lf> full on (valve 100% open)
- \*off <cr> <lf> off (valve 0% open, closed)
- \*reg <cr> <lf> regulate
- \*pur <cr> <lf> purge(vent, deprecated)
- \*v123.0 <cr> <lf> set vacuum to 123 Torr

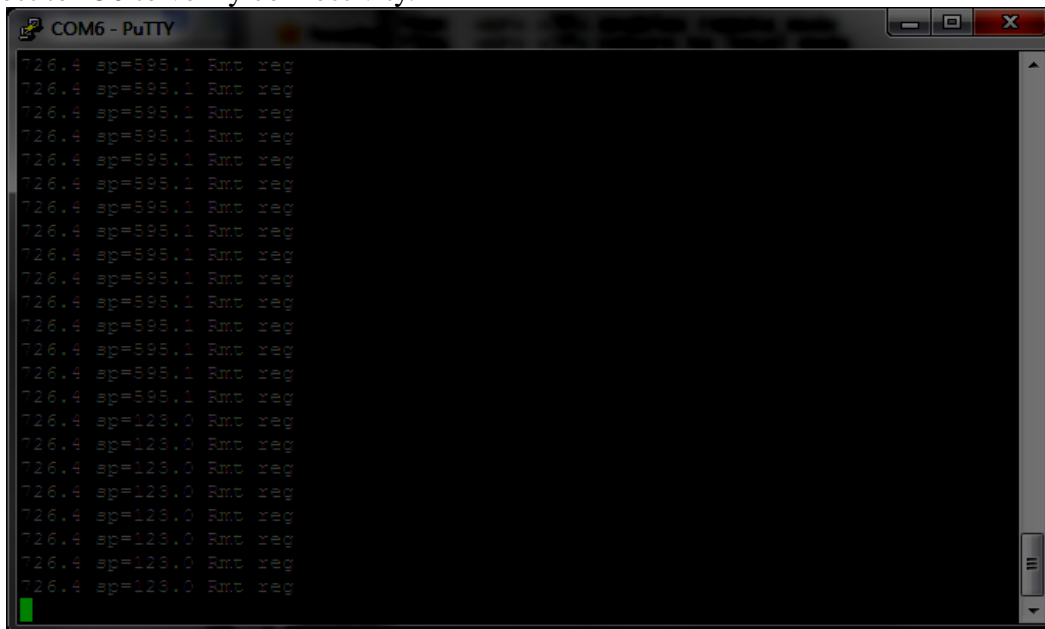
Verify serial port by looking at device manager:



Next, setup serial session with Putty (available from [putty.org](http://putty.org)):



Now connect to 450 to verify connectivity.

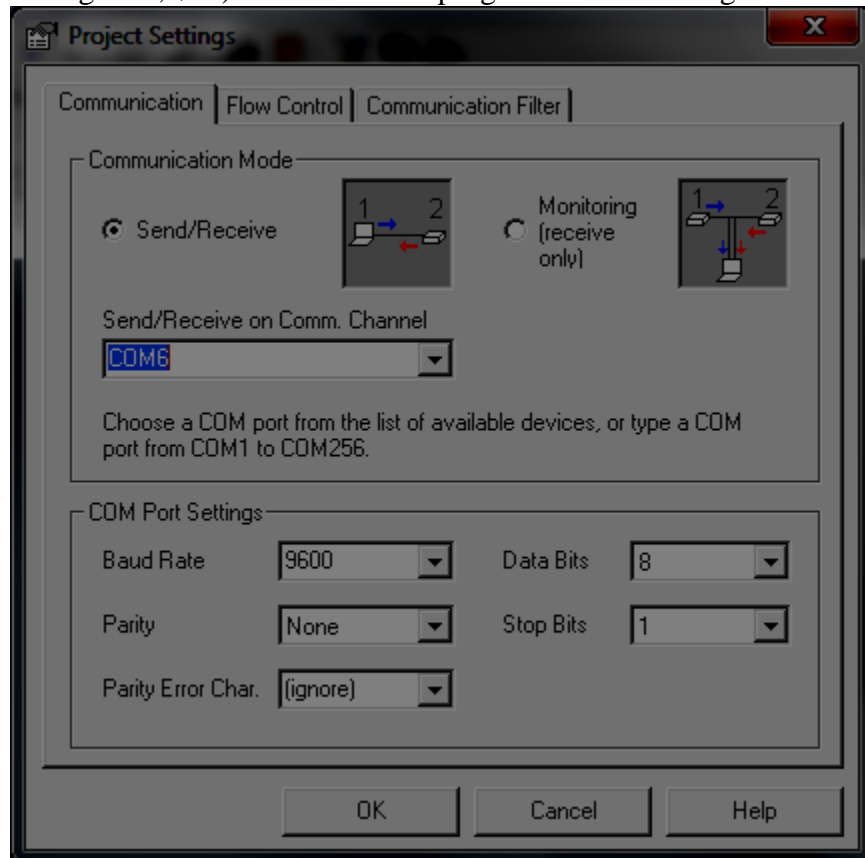


Paste “\*rmt” to get into remote mode

Next try to set a setpoint. For example to set the desired vacuum pressure to 123 Torr, paste “\*v123.0”

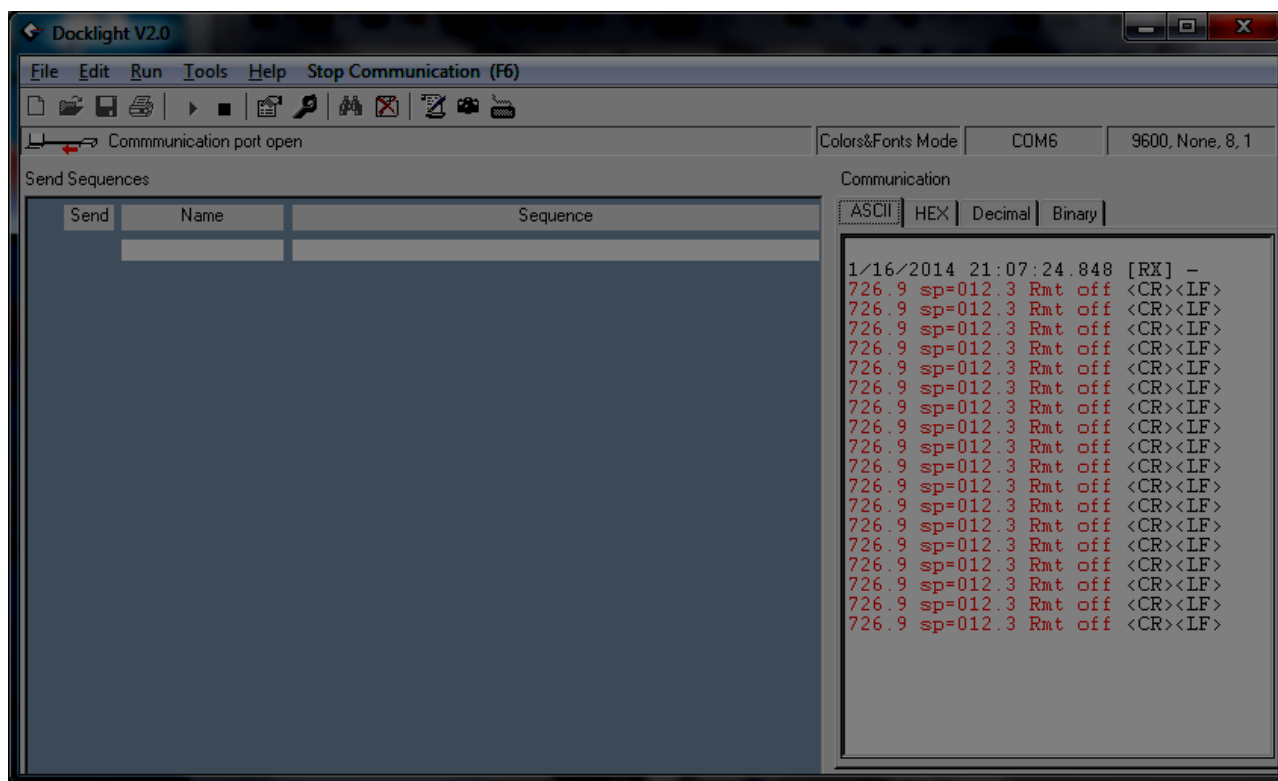
into the putty command terminal.

Docklight ([www.docklight.de](http://www.docklight.de), \$20) is also a useful program for interacting with the unit.

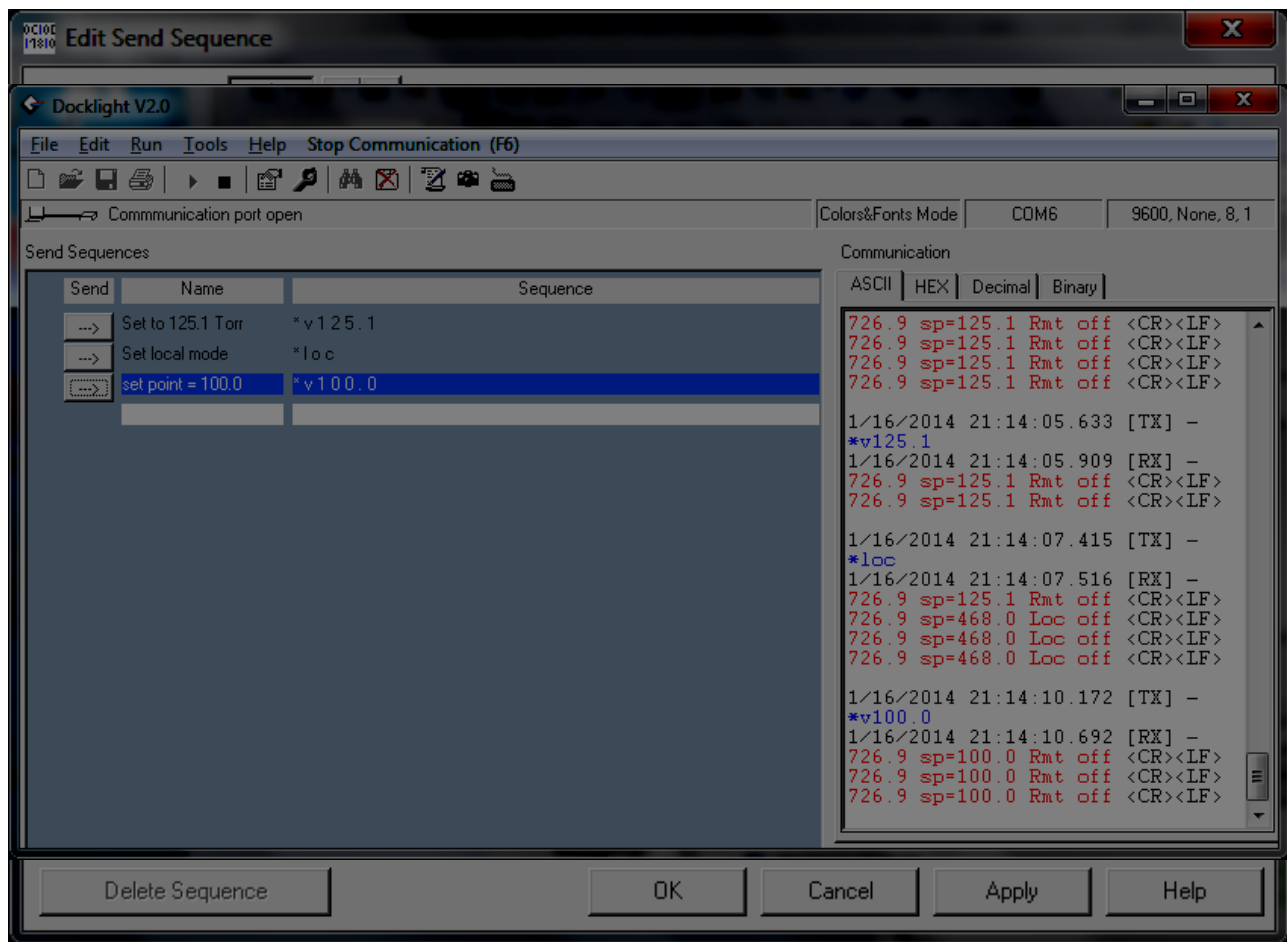


1. Open docklight and set communications com port and speed in the project setting dialogue
2. click OK





3. Hit F5 to start communication
4. type in send sequences of interest by double clicking the dark blue line under “Name” and entering ASCII sequence



5. Add as many commands as you would like. See the docklight configuration file: 450docklight.ptp

#### Troubleshooting:

- The 450 needs to be in remote mode. However if you send a set point over serial, the unit will automatically go into remote mode and set the set point.
- Note that when setting pressures, they need to include a decimal point. For example, set point = to “\*v123.5” will work, “\*v123.” Will not, and “\*v123” will not work either.
- When setting pressure set points, they need to be in the form “\*xxx.x”. For example setting 1 Torr would be “\*v001.0”, and setting 12.3 Torr would be in the form “\*v012.3”
- The 450 was designed for machine to machine communication. The entire command needs to be transmitted within 20milliseconds. In putty, you cannot type into the window to make the commands happen. Instead, you need to type the command into a text editor, then copy and paste (right click in putty window)
- Rebooting sets the 450 back to local vacuum control.
- Manual and remote vent/purge has been deprecated from 8J22 and 12i10. The vent/purge valve will bleed in gas to control up to a setpoint but only under remote control, no manual control of vent valve possible. Consult DigiVac if you would like this feature
- 8J22 imposes a 40% limit on the valve opening. 12i10 removes this limit.