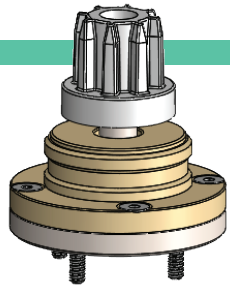




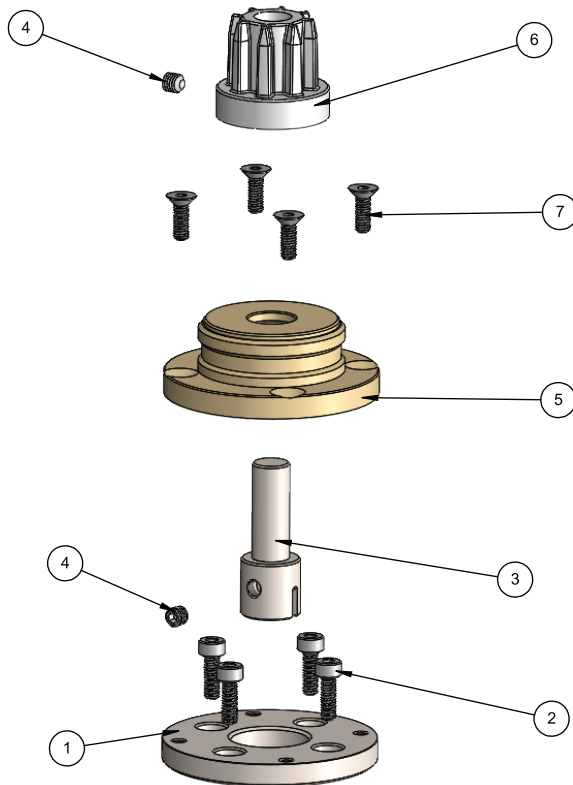
Assembly Instructions for Applikon® Agitator to Sartorius® Motor Adapter

Part No. CLS-1380-SAR1



Completed Assembly

Part No. CLS-1380-SAR1



Component Parts

- | | |
|---|----------------------------|
| 1 | Agitator Top Adapter Plate |
| 2 | Socket-Head Cap Screws |
| 3 | Shaft Adapter |
| 4 | Set Screws |
| 5 | Agitator Housing Cap |
| 6 | Agitator Spline Gear |
| 7 | Flat-Head Cap Screws |



Contact Us

T 1.800.843.1794 F 1.800.922.4361
tech@cglifesciences.com www.cglifesciences.com

Contact Us

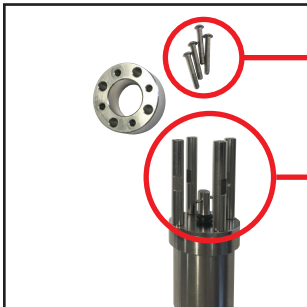
T 1.800.843.1794 F 1.800.922.4361
tech@cglifesciences.com www.cglifesciences.com



Adapter comes partially assembled as shown at left.



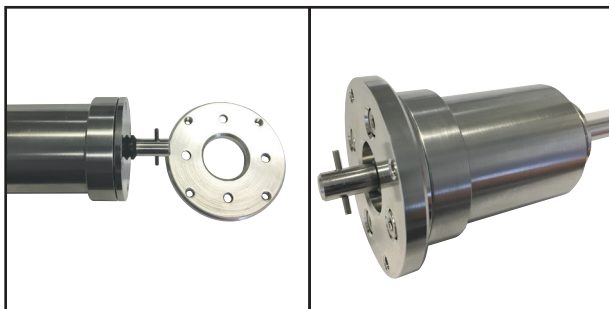
Step 1: Disassemble the adapter using the supplied 2.5mm Allen wrench as shown.



Step 2: Using the 2.5mm Allen wrench, remove the 4 top screws from the agitator assembly.

Step 3: Using a small crescent wrench (not supplied), remove the 4 extension legs from the agitator assembly.

CAUTION: Agitator top is now loose. ASAP, please install lower adapter as shown in **Step 4**.

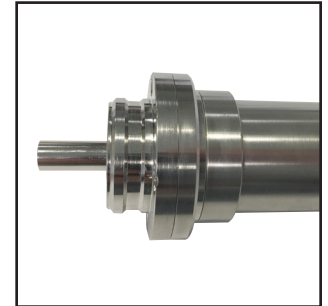


Step 4: Using a 3mm Allen wrench, attach the housing cap using the 4 socket head cap screws.

Step 5: Using a 2.5mm Allen wrench, slide the shaft adapter over the pin and tighten.



Step 6: Using a 2.5mm Allen wrench, attach the housing cap to the lower plate using the enclosed screws.



Step 7: Position spline gear approximately 5mm above the adapter plate and tighten with a 2.5mm Allen screw.

