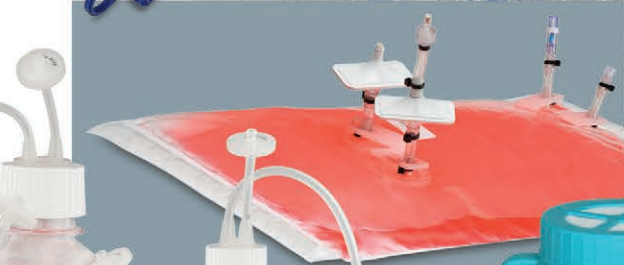




Single-Use Bioprocess Containers, Assemblies and Systems



ISO Class 7
Cleanroom

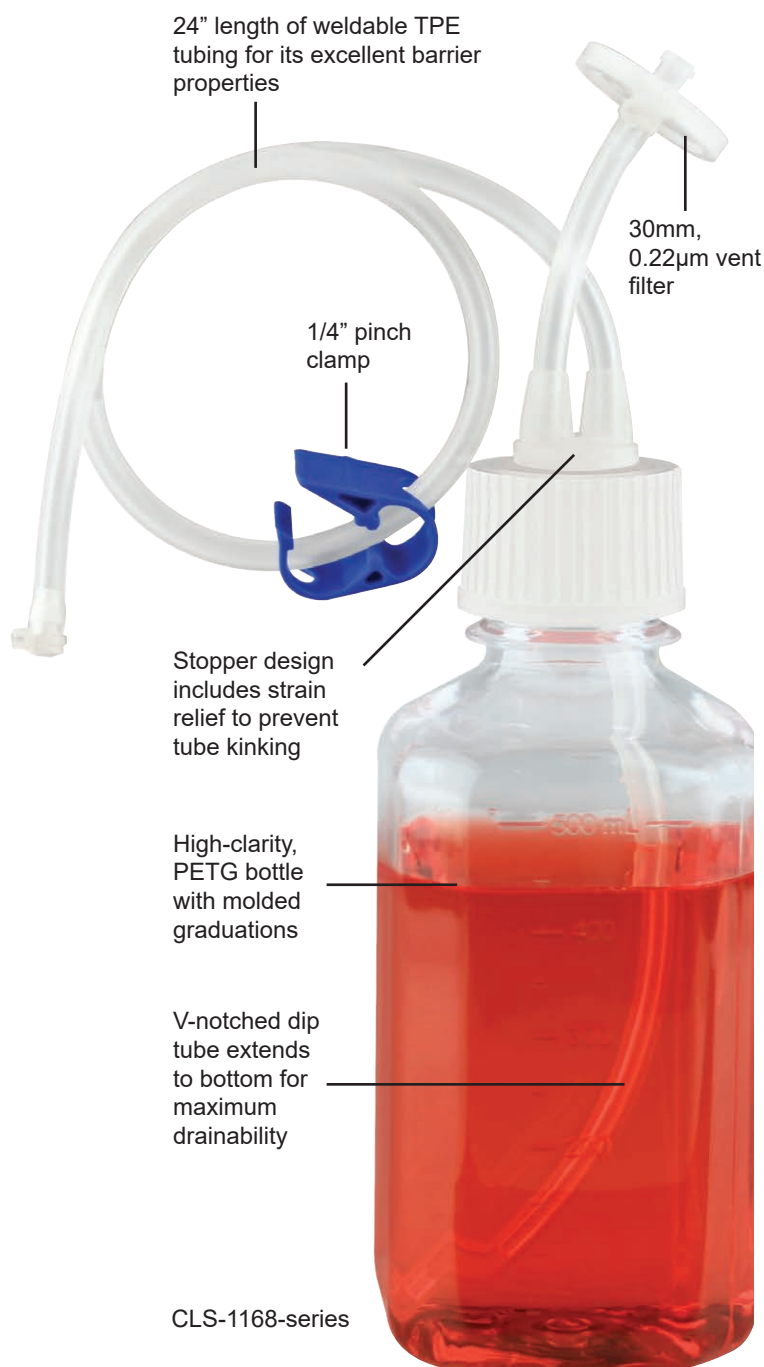
- custom assemblies
- feed bottles
- transfer flasks
- tubing assemblies
- sample tubes

T 1.800.843.1794

F 1.800.922.4361

singleuse@cglifesciences.com

www.cglifesciences.com



Single-Use Bottle Assemblies, PETG Bottles with PP Caps

- Designed to ensure an unobstructed fluid path
- Stopper includes molded strain relief to prevent kinking
- Manufactured, assembled and packaged in Class 7 cleanroom
- USP Class VI approved materials
- Animal Derived Component Free (ADCF)
- Gamma irradiated to Sterility Assurance Level (SAL) 10⁻⁶

Our single-use bottle assemblies in five standard sizes from 125mL to 2L. Each consists of a PETG bottle with a 2-port closure assembly, a 30mm / 0.22µm vent filter and a 24-inch length of tubing. A 1/4" pinch clamp is included on the tubing. The v-notched, dip tube extends to the bottom of the bottle for complete draining. Each unit is double poly-bagged and gamma irradiated at 25kGY-40kGY.

 **BioSciences**
EXCLUSIVELY THROUGH CHEMGLASS LIFE SCIENCES



*Available in Five
Bottle Sizes
and Various
End / Tubing
Configurations*

TPE Tubing and
Plugged End

TPE Tubing with
Male Luer and
1/8" Barb

Protective End Cap

C-Flex Tubing and
Plugged End

Single-Use Bottle Assemblies with PETG Bottles & PP Caps

Cap. (mL)	No. of Ports	Qty.	with TPE Tubing and Plugged End		with TPE Tubing and Male Luer End		with C-Flex Tubing and Plugged End	
			Part No.	Price	Part No.	Price	Part No.	Price
125	2	10	CLS-1168-0125	\$605.00 *	CLS-1168-0125MLC	\$605.00 *	CLS-1168-0125CFX	\$605.00 *
250	2	10	CLS-1168-0250	\$668.80 *	CLS-1168-0250MLC	\$668.80 *	CLS-1168-0250CFX	\$668.80 *
500	2	5	CLS-1168-0500	\$382.80 *	CLS-1168-0500MLC	\$382.80 *	CLS-1168-0500CFX	\$382.80 *
1,000	2	5	CLS-1168-1000	\$459.80 *	CLS-1168-1000MLC	\$459.80 *	CLS-1168-1000CFX	\$459.80 *
2,000	2	5	CLS-1168-2000	\$564.30 *	CLS-1168-2000MLC	\$564.30 *	CLS-1168-2000CFX	\$564.30 *

Custom Assemblies and Pricing Available - Give us a call or send an email.

1.800.843.1794 • singleuse@cglifesciences.com



CHEMcell® Rocker BioReactor System

Provides increased flexibility with modular format, optional trays and accessories.

CLS-1200-250
CLS-1200-300
Rocker Trays

CLS-1200-100
Base

- Adjustable tray angle
- Variable speed rocking
- Quiet operation
- Optional vent heater
- Two-year warranty



Easy Bag Installation

Position Control
Load - Harvest - Run

Speed Control
2 to 40 per minute

Tray Angle Control
2 to 12°

Digital Display
Bright and Easy-to-Read

Increased flexibility with modular format, optional trays and accessories.

Modular benchtop bioreactor system consists of a heavy-duty base unit and a choice of stainless steel rocker trays. Engineered for durability, it can be used in both research and development as well as production environments. The smooth rocking motion provides gentle, efficient mixing and gas transfer. Designed for optimal performance with Chemglass 8-port and 6-port cell culture bags but easily accepts other manufacturers' bags having the same dimensions. The optional bag and vent heater, made for use with both size trays, keeps vent filters free of harmful condensation that can clog filters and compromise cultures.

NOTE: Temperature controller, **CLS-1200-2CH**, must be purchased separately.

Specifications	CHEMcell Base	20 Liter Tray	50 Liter Tray
Weight (lbs)	45	22	34
Dimensions (L x W x H) inches / centimeters	19.5 x 16.6 x 6.5 49.53 x 42.16 x 16.51	21 x 27 x 2.5 53.35 x 68.58 x 6.35	27 x 30 x 2.5 68.58 x 76.2 x 6.35
Rocking Rate (per min.)	2 - 40	—	—
Rocking Angle (°)	2 - 12	—	—
Electrical	110-120V, 480W	—	—

CHEMcell BioReactors

Part No.	Description	Price
CLS-1200-100	CHEMcell® Rocker BioReactor Base Only	\$7,857.50 ♥
CLS-1200-250	CHEMcell® Rocker Tray, 10-20 Liter, Complete, With heater and PT100 Thermocouple	\$3,367.55 ♥
CLS-1200-300	CHEMcell® Rocker Tray, 20-50 Liter, Complete, With heater and PT100 Thermocouple	\$3,928.75 ♥

DISCOUNTS: * Not Subject to Discount ♥ Bioreactor Reactor ♣ Celltreat / Consumable LM Products ♦ Life Sciences Consumables.

Vent Heater

Vent heater for use with rectangular filters measuring 40 x 70mm. Use with temperature controller, CLS-1200-2CH.

Vent Heater

Part No.	Description	Qty.	Price
CLS-1200-FH	Vent Heater, 4 Watt	1	\$346.50 ♥



CLS-1200-FH
Vent Heater

Temperature Controller, J-KEM®

Controls heaters on both size trays along with vent heater.

Temperature Controller

Part No.	Description	Qty.	Price
CLS-1200-2CH	Temperature Controller	1	\$1,639.40 ♥

J-KEM is a registered trademark of J-KEM Scientific.



CLS-1200-2CH
Temperature Controller

Gas Mixing Module, CHEMcell™

The CHEMcell gas mixing module with touchscreen display is used for accurate mixing of two gases. It utilizes two Alicat gas flow controllers with built-in back pressure sensors for safe operation with a disposable bag or bioreactor. Flow rates are up to 1.1 liters per minute maximum. Gas totalizers allow you to track the total flow during the cell culture run.

Gas Mixing Module

Part No.	Description	Qty.	Price
CLS-1200-GMM	Gas Mixing Module	1	\$12,013.00 ♥



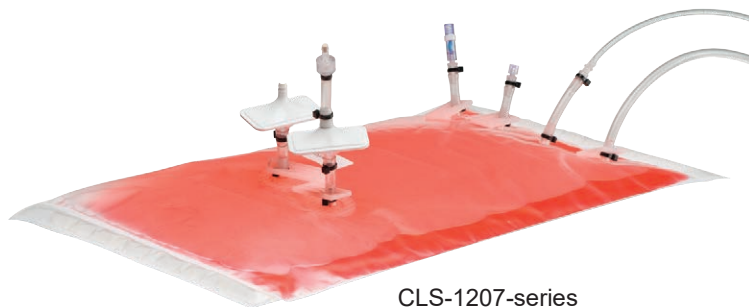
CLS-1200-GMM
Gas Mixing Module

Bags, Cell Culture, Ultra Clear, 6-Port, Compatible with GE Wave™ Rocking Platforms, Cell Culture Bag

Cell culture bags are manufactured from ultra clear Flex 600 robust film and gamma irradiated. The film meets USP Class VI specifications and is contamination free. The inner product contact material is low density polyethylene. All bags and components content materials are USP Class VI tested. Excellent choice for mammalian and plant culture cell lines with extended mixing times.

Six-Port, Ultra Clear, Cell Culture Bags

Part No.	Cap. (L)	No. of Ports	Qty.	Price
CLS-1207-10	10	6	1	\$450.20 ♥
CLS-1207-10M	10	6	10	\$3,433.50 ♥
CLS-1207-20	20	6	1	\$484.55 ♥
CLS-1207-20M	20	6	10	\$3,653.65 ♥
CLS-1207-22	22	6	1	\$493.60 ♥
CLS-1207-22M	22	6	10	\$3,700.80 ♥
CLS-1207-50	50	6	1	\$603.15 ♥
CLS-1207-50M	50	6	10	\$4,594.32 ♥



CLS-1207-series

3L Media Transfer Vessels with Barbed Fittings, Weldable C-Flex Tubing, Plugged, Plain or Baffled Bottom, Sterile

Media transfer vessels are ideal for doing gravity feeds from sterile 3L vessels. Fernbach flasks are sterile and individually double bagged.

Three liter polycarbonate flasks with filter caps have 3/16" barbed fittings that accept 1/8" ID, 1/4" OD weldable C-Flex® tubing ending in a plug. Each is supplied complete with a tubing clamp. Irradiated sterile. Call for bulk pricing.

3L Media Transfer Vessels, Sterile, Complete

Part No.	Bottom Type	Qty.	Price
CLS-1171-3LP	Plain	1	\$233.35 *
CLS-1171-3LB	Baffled	1	\$233.35 *



CLS-1171-3LP
Plain Bottom

CLS-1171-3LB
Baffled Bottom

Now available at Chemglass Life Sciences



Large Capacity & Compact CO₂ Incubator Shakers

CLS-2545-series Stackable Large Capacity
CLS-2542-series Stackable Compact

DISCOUNTS: * Not Subject to Discount ♥ Bioreactor Reactor ♣ Celltreat / Consumable LM Products ◇ Life Sciences Consumables.



BioSciences
EXCLUSIVELY THROUGH CHEMGLASS LIFE SCIENCES



5L Sterile Media Transfer Flask with Platinum-Cured Silicone Tubing and Quick Disconnect

- Quick disconnect fitting on tubing
- 1/4" ID x 7/16" OD platinum-cured silicone tubing

Dual purpose, 5L transfer flasks are designed for the sterile transfer of liquids as well as for single-use inoculation vessels. They're ideal for use doing gravity feed from sterile, 5L vessels.

Erlenmeyer-style, polycarbonate flask includes a cap with 0.2 μ m hydrophobic filter, 3/16" barbed fitting, 1/4" ID x 7/16" OD platinum-cured tubing, tubing clamp and quick disconnect. Supplied gamma irradiated, sterile and individually double bagged.

5L Media Transfer Flask with Quick Disconnect

Part No.	Vol. (L)	Qty.	Price
CLS-1171-5LQC	5	1	\$252.85 *

5L Sterile Media Transfer Flask with C-Flex® Tubing and Plugged End

- Tubing end is plugged
- 1/4" ID X 3/8" OD weldable, C-Flex tubing

Dual purpose, 5L transfer flasks are designed for the sterile transfer of liquids as well as for single-use inoculation vessels. They're ideal for use doing gravity feed from sterile, 5L vessels.

Erlenmeyer-style, polycarbonate flask includes a cap with 0.2 μ m hydrophobic filter, 1/4" barbed fitting, 1/4" ID x 3/8" OD or 1/4" ID x 7/16" OD weldable C-Flex® tubing with a plugged end and tubing clamp. Supplied gamma irradiated, sterile and individually double bagged.

5L Media Transfer Flask with Plugged Tubing

Part No.	Tube Size	Vol. (L)	Qty.	Price
CLS-1171-5LWT	17	5	1	\$252.85 *
CLS-1171-5LWB	24	5	1	\$252.85 *

CUSTOM FLUID TRANSFER SOLUTIONS *designed for the unique needs of your process.*

CONTACT US
1.800.843.1794
singleuse@cglifesciences.com

DISCOUNTS: * Not Subject to Discount ♥ Bioreactor Reactor ♣ Celltreat / Consumable LM Products ♦ Life Sciences Consumables.



CGN-2165-2LSC
CGN-2165-3LSC



CGN-2165-5L



CGN-2165-3W

NEST High Efficiency Polycarbonate Flasks with Solid or Vent Caps , Sterile, USP Class VI

- Polycarbonate has high standard of transparency and the flask has a clear graduation scale for easy observation.
- Sterilized by E-Beam
- Non-Pyrogenic
- Packaged in sterile bags, 4 per case

Tips

- Recommended volume: 30-40% of the bottle volume.
- Rotation speed suggestion: the starting speed is 75-125RPM, you can control the rotation speed according to the application.

The imported medical-grade polycarbonate that meets with the requirements of ISO 10993 USP<661> is chosen as the raw materials, which has high transparency, great impact resistance, oxidation resistance and can withstand a high temperature of up to 121°C. The scale is clear and accurate when looked at from the outside, which facilitates the observation of the volume of culture medium. The vent cap is equipped with a 0.22μm breathable film which is air-permeable and water-proof to efficiently prevent the passing of micro-organisms and contamination and to ensure gas exchange for good growth of cells or bacteria. The products have undergone the tightness test, drop test, high-temperature and high-voltage tests, flatness test, tensile test, endotoxin test, sterilization test, DNA/RNA enzyme-free tests and cell culture test, all the results of which meet the corresponding quality standards.

NEST 2 Liter, High Efficiency, PC Flasks with Caps, Sterile

Part No.	Volume (L)	Cap Type	Qty.	Price
CGN-2165-2LSC	2	solid	4	\$284.00 *
CGN-2165-2L	2	vent	4	\$292.50 *

NEST 3 Liter, High Efficiency, PC Flasks with Caps, Sterile

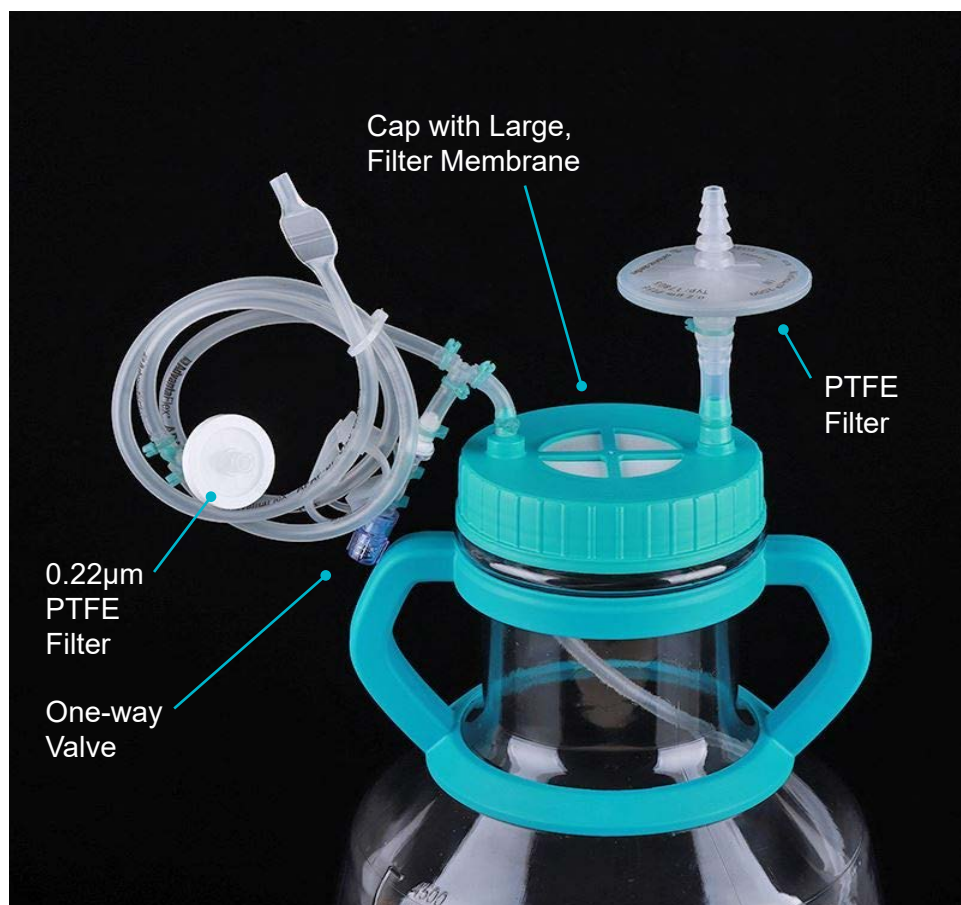
Part No.	Volume (L)	Cap Type	Qty.	Price
CGN-2165-3LSC	3	solid	4	\$330.00 *
CGN-2165-3L	3	vent	4	\$342.50 *

NEST 3 Liter, Wide Mouth High Efficiency, PC Flasks with Caps, Sterile

Part No.	Volume (L)	Cap Type	Qty.	Price
CGN-2165-3WSC	3	solid	4	\$330.00 *
CGN-2165-3W	3	vent	4	\$342.50 *

NEST 5 Liter, PC Flasks with Filter Vent Caps, Sterile

Part No.	Volume (L)	Cap Type	Qty.	Price
CGN-2165-5LSC	5	solid	4	\$406.50 *
CGN-2165-5L	5	vent	4	\$406.50 *



NEST Multi-function, Liquid Transfer Caps

The multi-functional transfer cap can be directly placed in an incubator for culture after the liquid transfer is completed. It can reach a large air flux. The sampling part is composed of a sampling nozzle and a one-way valve, which can prevent the liquid from flowing backwards during the sampling process and ensure the aseptic sampling. The liquid inlet tubing is provided with a PTFE needle filter, which solves the issue of liquid remaining in the tubing during the feeding process.

Part No.	Fits	Qty.	Price
CGN-2165-785	2L	CS4	\$860.00 *
CGN-2165-786	3L	CS4	\$729.50 *
CGN-2165-787	3L Wide Mouth & 5L	CS4	\$871.50 *

Chemglass Life Sciences ISO Class 7 Cleanroom



Single-Use Bioprocess Containers, Assemblies and Systems

- custom assemblies
- feed bottles
- transfer flasks and cap assemblies
- tubing assemblies
- sample tube assemblies
- bioreactor tubing kits
- Barblock® retainer systems
- CPC tubing connectors
- accessories



EXCLUSIVELY THROUGH CHEMGLASS LIFE SCIENCES



Four
Bottom
Baffles

CLS-2091-series
CLS-2093-series
Blue Duo Caps



Plain
Bottom

CLS-2090-series
CLS-2092-series
Blue Duo Caps

Polycarbonate Erlenmeyer Flasks with Graduations and Duo Caps®, Sterile

Available with Baffled or Plain Bottoms

Erlenmeyer flasks are sterile, non-pyrogenic and manufactured with polycarbonate resin. Flasks are supplied with either exclusive DuoCap designed for both aerobic and anaerobic applications (for aerobic applications the cap utilizes a 0.22µm pore size PTFE membrane for sterile air exchange; for anaerobic applications the cap can easily be converted to a solid cap design) or green filter caps. Solid top caps are also ideal for applications requiring mixing, shaking and storage of biological fluids. Graduations are molded for accuracy. New EZ-Tear packaging allows for easy access.

Polycarbonate Erlenmeyer Flasks with BAFFLED BOTTOMS, Sterile

Part No.	Cap. (mL)	Cap Type	GPI Thread Size	Qty.	Price
BAFFLED Flasks with Blue Duo Caps					
CLS-2093-125S	125	Blue Duo	38-430	24	\$224.75 ◇
CLS-2093-250S	250	Blue Duo	38-430	12	\$132.20 ◇
CLS-2093-500S	500	Blue Duo	38-430	12	\$175.45 ◇
CLS-2093-1000S	1000	Blue Duo	53-B	6	\$132.00 ◇
CLS-2093-200S	2000	Blue Duo	53-B	6	\$157.80 ◇
BAFFLED Flasks with Blue Duo Caps in Bulk Packs					
CLS-2091-125B	125	Blue Duo	38-430	144	\$1,228.85 ◇
CLS-2091-250B	250	Blue Duo	38-430	72	\$722.20 ◇
CLS-2091-500B	500	Blue Duo	38-430	48	\$638.25 ◇
CLS-2091-1000B	1000	Blue Duo	53-B	24	\$479.85 ◇
CLS-2091-200B	2000	Blue Duo	53-B	24	\$575.00 ◇

Polycarbonate Erlenmeyer Flasks with PLAIN BOTTOMS and Blue Duo Caps

Part No.	Cap. (mL)	Cap Type	GPI Thread Size	Qty.	Price
PLAIN Flasks with Blue Duo Caps					
CLS-2092-125S	125	Blue Duo	38-430	24	\$219.75 ◇
CLS-2092-250S	250	Blue Duo	38-430	12	\$128.70 ◇
CLS-2092-500S	500	Blue Duo	38-430	12	\$175.45 ◇
CLS-2092-1000S	1000	Blue Duo	53-B	6	\$130.75 ◇
CLS-2092-200S	2000	Blue Duo	53-B	6	\$158.55 ◇
PLAIN Flasks with Blue Duo Caps in Bulk Packs					
CLS-2090-125B	125	Blue Duo	38-430	144	\$1,228.85 ◇
CLS-2090-250B	250	Blue Duo	38-430	72	\$722.20 ◇
CLS-2090-500B	500	Blue Duo	38-430	48	\$638.25 ◇
CLS-2090-1000B	1000	Blue Duo	53-B	24	\$479.85 ◇
CLS-2090-200B	2000	Blue Duo	53-B	24	\$575.00 ◇

DISCOUNTS: * Not Subject to Discount ♥ Bioreactor Reactor ♣ Celltreat / Consumable LM Products ◇ Life Sciences Consumables.

PETG Erlenmeyer Flasks with HDPE Vent Caps, Flat Bases, Sterile, NEST

- PETG flask with HDPE vent cap
- Ideal for shaker culture applications.
- Sterilized by E-Beam
- Non-pyrogenic
- Packaged in sterile bags
- Breathable membrane
- 0.22µm hydrophobic filter for gas exchange
- Non-toxic and environmentally friendly

PETG Erlenmeyer Flasks with HDPE Vent Caps, Sterile

Part No.	Cap. (mL)	Qty.	Reg. Price	SALE Price
CGN-2092-125	125	24	\$195.50	\$156.40 ♣
CGN-2092-250	250	12	\$148.00	\$118.40 ♣
CGN-2092-500	500	12	\$179.50	\$143.60 ♣
CGN-2092-1000	1,000	6	\$151.00	\$120.80 ♣



CGN-2092-series

Polycarbonate Erlenmeyer Flasks with Vent Caps, Graduated, Individually Bagged, Sterile

- Designed for mammalian suspension culture applications as well as bacterial & yeast culture
- Polycarbonate available with vent cap only
- Vent caps with over-sized vent area feature 0.22µm hydrophobic membrane which allows for improved gas exchange without contamination
- Avoid contamination with single-use, pre-sterilized flasks
- Lightweight material is easier to handle than glass
- Bottles include molded graduation lines
- Individually bagged for easy storage and handling
- Medical grade virgin polycarbonate is autoclavable

Polycarbonate Erlenmeyer Flasks with Vent Caps, Graduated, Individually Bagged, Sterile

Part No.	Cap. (mL)	Qty.	Reg. Price	SALE Price
CLS-2094-125	125mL	12	\$123.00	\$98.40 ♣
CLS-2094-250	250mL	12	\$137.00	\$109.60 ♣
CLS-2094-500	500mL	12	\$173.00	\$138.40 ♣



CLS-2094-series



CLS-2171-series

Flasks, Polycarbonate, Vented Caps, Baffled Bottom

CELLTREAT® Erlenmeyer and Fernbach culture flasks are designed for shaker and cell culture applications. All flasks feature a 70mm neck size that provides easy access for filling and dispensing. The unique shape of the Fernbach flask provides an increased surface area to volume ratio for improved gas exchange. The flasks are available in 2L Erlenmeyer, 2L and 3L Fernbach sizes, with baffled bottoms. The polypropylene caps are knurled for secure grip and are configured in 70mm large vent or non-vented styles. The flasks are constructed from an optically clear polycarbonate material that can be autoclaved. All flasks include a vented cap and are individually packed in bags and gamma irradiation sterilized. Additional caps are available separately.

Polycarbonate Flasks with BAFFLED BOTTOMS and Vented Caps

Part No.	Type	Vol. (L) / Max. Vol. (mL)	Cap Size (mm)	Qty.	Reg. Price	SALE Price
CLS-2171-EB2L	Erlenmeyer	2 / 2,200	70	6	\$282.00	\$225.60 ♣
CLS-2171-FB2L	Fernbach	2 / 2,400	70	6	\$323.00	\$258.40 ♣
CLS-2171-FB3L	Fernbach	3 / 4,000	70	4	\$319.00	\$255.20 ♣

Polypropylene Caps

Part No.	Cap Type	Cap Size (mm)	Qty.	Reg. Price
CLS-2172-V070	vented	70	1	\$190.00 ♣
CLS-2072-S070	solid	70	1	\$96.00 ♣



CLS-2170-series

Flasks, Polycarbonate, Vented Caps, Plain Bottom

CELLTREAT® Erlenmeyer and Fernbach culture flasks are designed for shaker and cell culture applications. All flasks feature a 70mm neck size that provides easy access for filling and dispensing. The unique shape of the Fernbach flask provides an increased surface area to volume ratio for improved gas exchange. The flasks are available in 2L Erlenmeyer, 2L and 3L Fernbach sizes, with plain bottoms. The polypropylene caps are knurled for secure grip and are configured in 70mm large vent or non-vented styles. The flasks are constructed from an optically clear polycarbonate material that can be autoclaved. All flasks include a vented cap and are individually packed in bags and gamma irradiation sterilized. Additional caps are available separately.

Polycarbonate Flasks with PLAIN BOTTOMS and Vented Caps

Part No.	Type	Vol. (L) / Max. Vol. (mL)	Cap Size (mm)	Qty.	Reg. Price	SALE Price
CLS-2170-EP2L	Erlenmeyer	2 / 2,200	70	6	\$279.00	\$223.20 ♣
CLS-2170-FP2L	Fernbach	2 / 2,400	70	6	\$319.00	\$255.20 ♣
CLS-2170-FP3L	Fernbach	3 / 4,000	70	4	\$317.00	\$253.60 ♣

Polypropylene Caps

Part No.	Cap Type	Cap Size (mm)	Qty.	Reg. Price
CLS-2172-V070	vented	70	1	\$190.00 ♣
CLS-2072-S070	solid	70	1	\$96.00 ♣

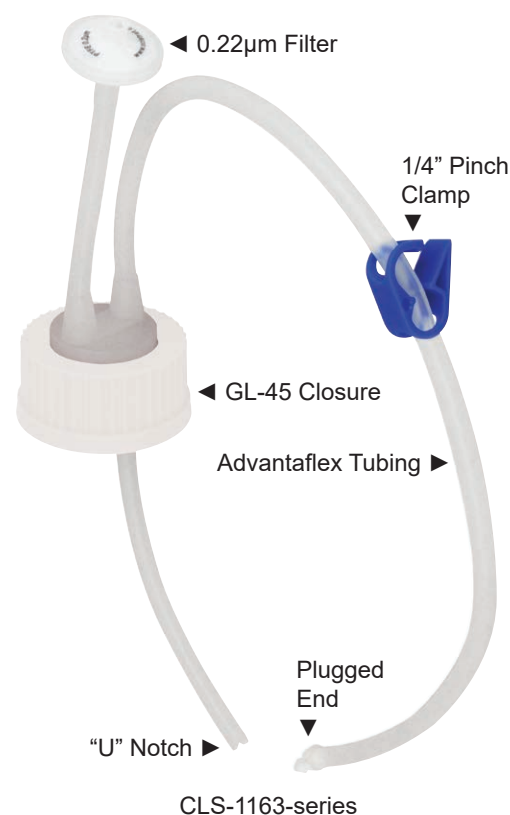
DISCOUNTS: * Not Subject to Discount ♥ Bioreactor Reactor ♣ Celltreat / Consumable LM Products ◇ Life Sciences Consumables.

Feed Bottle Transfer Assemblies with GL-45 Threaded Caps, Two Ports, AdvantaFlex® Tubing, Sterile

Chemglass Life Sciences GL-45 cap transfer assemblies are available in sizes from 125mL-1L. These transfer assemblies are extremely helpful for sterile transfer of liquids from containers or bottles which have a GL-45 threaded neck. Our assemblies are a great choice to achieve sterile fluid transfer when using Corning and Thermo Fisher filter systems and storage bottles.

Each 2-port GL-45 closure assembly includes a 0.22µm filter, 24-inch length of AdvantaFlex tubing with a plugged end, 1/4" pinch clamp and a V- notched dip tube. The assembly is made from pharmaceutical grade thermoplastic elastomer resin. Manufactured, assembled and packaged in a Class 7 cleanroom, USP Class VI approved components. Each assembly is individually double poly-bagged and gamma-irradiated.

Please note: Compatible with Fisher / Nunc brand and Corning brand filter media bottles.



Feed Transfer from Filter Systems



Two Port Transfer Assemblies with GL-45 Caps, Sterile

Part No.	Size (mL)	Qty.	Price
CLS-1163-0125	125	5	\$135.30 *
CLS-1163-0250	250	5	\$136.20 *
CLS-1163-0500	500	5	\$138.25 *
CLS-1163-1000	1,000	5	\$138.95 *

BioSciences
EXCLUSIVELY THROUGH CHEMGLASS LIFE SCIENCES

Single-Use
Bioprocess Tubing
Assemblies to
Your Custom
Specifications

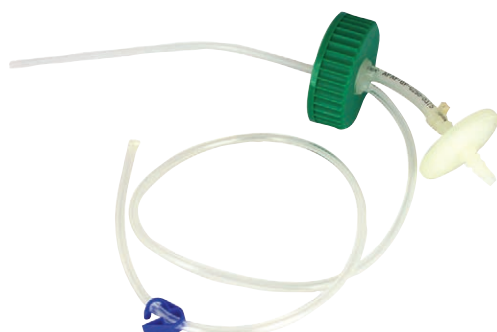
See pg. 23 for details.



CLS-1161-series



For Corning Fernbach Flasks
CLS-3465-3LC



For CellTreat Fernbach Flasks
CLS-3465-3LA



CLS-3465-series

See the Sterile Transfer Cap Assembly for 20L Nalgene Carboys on page 18.

Transfer Assemblies, Vented, for Single-Use Media Bottles, with Plugged Ends and TPE, Weldable Tubing, Sterile

Transfer cap assemblies, vented for Single Use Media bottles are a cost effective and convenient way to transfer liquid. The venting port ends in a 30mm diameter vent filter with a 0.20µm pore PTFE (hydrophobic) membrane and barbed fitting. All components in contact with the media are USP Class VI and the Size 16 tubing has a clamp and a plugged end. Tubing with a tubing clamp and ending with a plugged end. Individually double bagged and gamma irradiated sterile.

Vented Transfer Assemblies for Single-Use Media Bottles, Sterile

Part No.	Size (mL)	Qty.	Price
CLS-1161-0125	125	5	\$175.25 *
CLS-1161-0250	250	5	\$176.40 *
CLS-1161-0500	500	5	\$179.15 *
CLS-1161-1000	1,000	5	\$180.55 *
CLS-1161-2000	2,000	5	\$196.75 *

3L Transfer Assembly with Plugged End and Weldable C-Flex® Tubing, Sterile

Available for Corning and CellTreat Flasks

Transfer cap assemblies for 3L Fernbach flasks. The venting port ends in a 50mm diameter vent filter with a 0.20µm pore PTFE (hydrophobic) membrane and barbed fitting. On the external side you will find 1/8" ID x 1/4" OD weldable C-Flex® tubing with a tubing clamp and ending with a 1/8" end tube plug. The liquid transfer port has an internal end with a rigid 1/8" x 1/4" OD C-Flex dip tube to reach the bottom of the flask. Individually double bagged and gamma irradiated sterile.

3L Transfer Assembly, Corning, Sterile

Part No.	Description	Qty.	Price
CLS-3465-3LC	3L Transfer Assembly, Corning	1	\$303.60 ◇
CLS-3465-3LA	3L Transfer Assembly, CellTreat	1	\$303.60 ◇

Transfer Assemblies with Plugged Ends and Weldable C-FLEX® Tubing, Triforest®, Sterile

Transfer cap assemblies for 1L and 2L Triforest® Erlenmeyer flasks. The venting port ends in a 50mm diameter vent filter with a 0.20µm pore PTFE (hydrophobic) membrane and barbed fitting. On the external side you will find 1/8" ID x 1/4" OD weldable C-Flex tubing with a tubing clamp and ending with a 1/8" end tube plug. The liquid transfer port has an internal end with a rigid 1/8" ID x 1/4" OD C-Flex dip tube with a notched end to reach the bottom of the flask. Individually double bagged and gamma irradiated sterile.

Transfer Assembly for Triforest Erlenmeyer Flasks

Part No.	Description	Qty.	Price
CLS-3465-10	1L Transfer Assembly, Triforest	1	\$114.85 ◇
CLS-3465-20	2L Transfer Assembly, Triforest	1	\$119.95 ◇

DISCOUNTS: * Not Subject to Discount ♥ Bioreactor Reactor ♣ Celltreat / Consumable LM Products ◇ Life Sciences Consumables.

Sample Tube™ Assemblies, 50mL, Sterile, Single-Use, 50mL Centrifuge Tube

The 50mL polypropylene centrifuge tube assembly utilizes a closed cap assembly with 18" of size 16 (1/8" x 1/4") C-Flex tubing inlet line with a pinch clamp and plugged. The assembly includes a 3" vent line with a PTFE filter. Assembly is certified sterile.

The sample tube assembly can be used for sampling and transfer of biopharmaceutical products and reagents in closed systems. Sold individually wrapped in a bag of ten.

Part No.	Vol. (mL)	Cent. Tube Material	Inner Dip Tube Material	Qty.	Price
CLS-1407-T-312	50	PP	C-Flex	10	\$463.30 *

OmniTop Sample Tube™ Assemblies, Pre-Sterilized, Single-Use, 15mL and 50mL Centrifuge Tubes

- Transfer of biopharmaceutical products and reagents in a closed system
- Gas exchange transfer
- Sampling of biopharmaceutical products and reagents in a closed system
- Storage of biopharmaceutical products and reagents
- Use with bench top, pilot plant and production bioreactors
- Use with sterile connecting devices and thermal or RF tubing sealers

OmniTop Sample Tubes are convenient devices that can be used to obtain fluid samples. Each OmniTop tube comes with a pre-attached 0.2µm vent filter and 18" of C-Flex® tubing. They are available with or without internal dip-tubes to facilitate removal of the fluid inside.

OmniTop Samples Tubes can be aseptically connected to your bio reactor or other device using standard tubing welders. Sample Tubes can also be aseptically sealed and removed (wet or dry) using tubing sealers.

Blue caps indicate the tubes are polypropylene. **Purple caps** indicate the tubes are polystyrene.

Custom Sample Tube Assemblies Available: tech@cglifesciences.com

15mL Assemblies with C-Flex Inlets, Double Bagged & Gamma Irradiated

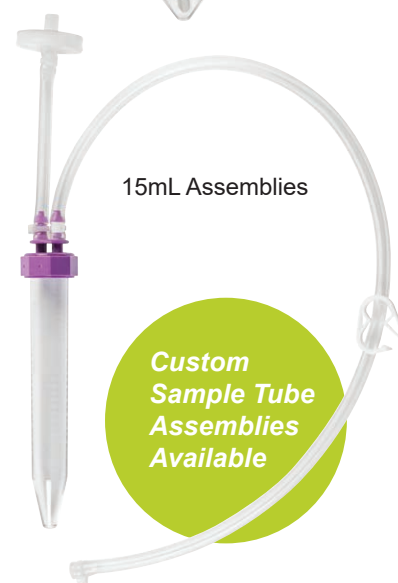
Part No.	Vol. (mL)	Cent. Tube Material	Inner Dip Tube Material	Qty.	Price
CLS-1407-T-015	15	PP	no dip tube	10	\$504.00 *
CLS-1407-T-115	15	PS	no dip tube	10	\$504.00 *

50mL Assemblies with C-Flex Inlets, Double Bagged & Gamma Irradiated

Part No.	Vol. (mL)	Cent. Tube Material	Inner Dip Tube Material	Seal Tube	Qty.	Price
CLS-1407-T-10	50	PP	PP	yes	10	\$528.00 *
CLS-1407-T-12	50	PP	PP	no	10	\$528.00 *



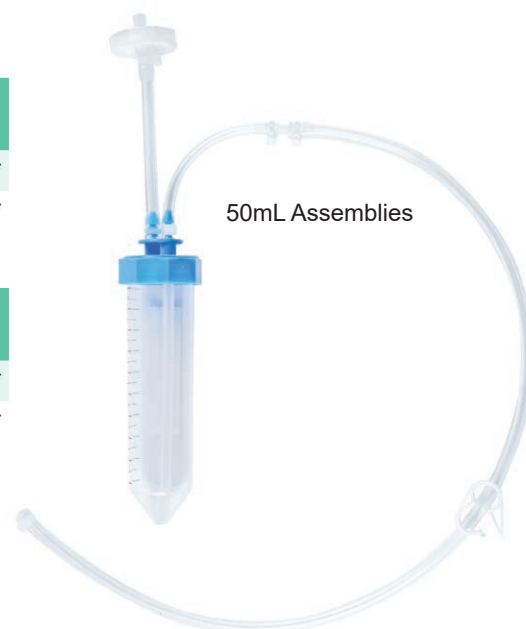
CLS-1407-T-312



15mL Assemblies

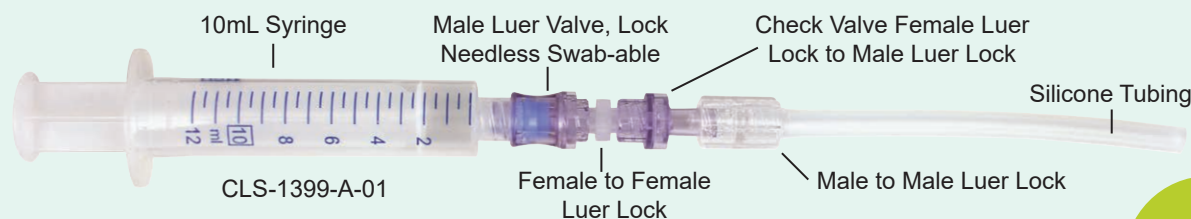
**Custom
Sample Tube
Assemblies
Available**

CLS-1407-T-series



50mL Assemblies

10mL Bioreactor Syringe Samplers with Luer Lock Connections



Sampler uses all luer style connections, eliminating any needle sampling and risk of puncture injuries. No valves - the sampling valve is opened by the attachment of the sampling syringe and automatically closes once the syringe is removed. Great for cell culture sampling of spinner flasks or bags.

10mL Bioreactor Syringe Samplers with Luer Lock Connections

Part No.	Syringe Vol. (mL)	Qty.	Price
CLS-1399-A-01	10	10	\$295.45 *

Safety

All luer-style connections make for safe sampling.

All Assemblies and Kits are Assembled in a Class 7 Cleanroom



CLS-1390-11
Universal Line Assembly

Universal Line Assembly

- Reduces set up time and minimizes labor cost

Universal line assembly is individually bagged and ready to use. Use as a media inlet assembly, sparger line assembly or overlay gas assembly. Includes a 0.22µm PTFE Filter. Manufactured with platinum cured silicone tubing. For sterile applications the assembly can be safely autoclaved.

Part No.	Description	Qty.	Price
CLS-1390-11	Universal Line Assembly	1	\$21.25 *



CLS-1390-12
Condenser Vent Line Assembly

Condenser Vent Line Assembly

- Polypropylene housing with stepped barbed connections

Condenser line assembly is individually bagged and ready to use. Includes a 50mm 0.22µm PTFE filter with a 1/4"-3/8" stepped barb. Manufactured with platinum cured silicone tubing. For sterile applications the filter can be safely autoclaved up to 30 times. Each filter is identified with a part number and heat stamped with a lot number.

Part No.	Description	Qty.	Price
CLS-1390-12	Condenser Vent Line Assembly	1	\$60.55 *



CLS-1390-13
Sample Line Assembly

Sample Line Assembly

- Reduces set up time and minimizes labor cost

Sample line assembly is individually bagged and ready to use. Swabable valve can be used for sampling bioreactors. Manufactured with platinum cured silicone tubing. For sterile applications the Sampler can be safely autoclaved.

Part No.	Description	Qty.	Price
CLS-1390-13	Sample Line Assembly	1	\$25.10 *



EXCLUSIVELY THROUGH CHEMGLASS LIFE SCIENCES

DISCOUNTS: * Not Subject to Discount ♥ Bioreactor Reactor ♣ Celltreat / Consumable LM Products ◇ Life Sciences Consumables.

Y Connector with Male Luer, Ready-to-Use

- Reduces set up time and minimizes labor cost

Our Y connector and male luer assembly are package 10 per bag and ready to use. Manufactured with 5" of No. 16 (1/8 x 1/4") platinum cured silicone tubing. For sterile applications the assembly can be safely autoclaved.

Y Connector with Male Luer

Part No.	Qty.	Price
CLS-1390-22	10	\$184.75



CLS-1390-22

**Ready-to-Use
Tubing Sets
reduce set
up time and
minimize labor
cost.**

Straight Connector with Male Luer, Ready-to-Use

Manufactured with 30" of No. 18 (1/8 x 1/4") platinum cured silicone tubing. For sterile applications the assembly can be safely autoclaved.

Straight Connector with Male Luer

Part No.	Qty.	Price
CLS-1390-23	10	\$179.20 ♥



CLS-1390-23

Cross Connector with Male Luer, Ready-to-Use

Manufactured with 5" of No. 16 (1/8 x 1/4") platinum cured silicone tubing. For sterile applications the assembly can be safely autoclaved.

Cross Connector with Male Luer

Part No.	Qty.	Price
CLS-1390-24	10	\$183.00 ♥



CLS-1390-24

Fluid Transfer Extension Lines, Plugged Ends, Sterile

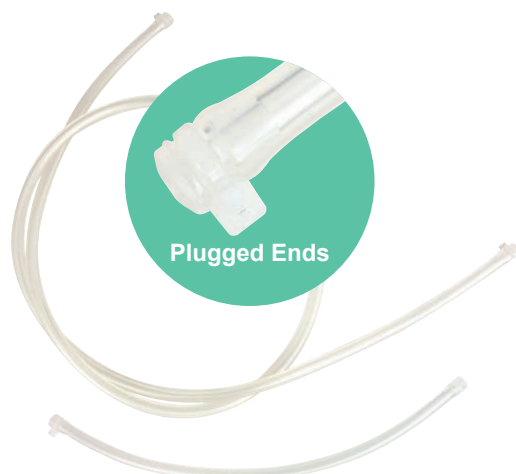
Fluid transfer extension lines are produced in a Class 7 Cleanroom with weldable, size 16 (1/8 x 1/4"), TPE tubing. Available in both Advantaflex and C-Flex tubing, with both ends plugged. Fluid transfer lines are designed to aid in the process of transfer and filling of bioreactors, mixers and fermenters. Individually wrapped and sterile.

Extension Lines with Plugged Ends, Advantaflex, Sterile

Part No.	Material	Length (in.)	Qty.	Price
CLS-1390-A009	Advantaflex	9	10	\$111.65 ♥
CLS-1390-A036	Advantaflex	36	10	\$147.95 ♥

Extension Lines with Plugged Ends, C-Flex, Sterile

Part No.	Material	Length (in.)	Qty.	Price
CLS-1390-C009	C-Flex	9	10	\$111.65 ♥
CLS-1390-C036	C-Flex	36	10	\$147.95 ♥



Plugged Ends

CLS-1390-series
Extension Lines

CLS-1390-21C



Ideal for
sampling ports
in biopharma
applications.

CLS-1390-21V



Swabable Valve with 1/8-inch Barb

Unique and innovative patented design allows use in a wide variety of demanding applications where a high flow and a closed system are a must. Valves are DEHP-free, made with ISO-10993 materials and not made with natural rubber latex. Bodies are made with BPA-free materials and polycarbonate. Valves mate securely with standard ISO-594 compliant syringes and connectors.

Easy, direct assembly to tubing without Luer connectors or solvents and adhesives.

Swabable Valve with 1/8" Barb (Purchase Luer Caps Separately)

Part No.	Description	Qty.	Price
CLS-1390-21V	Swabable Valve with 1/8" Barb	25	\$66.00 ♥
CLS-1390-21C	Non-vented Luer Cap without Stem, Female	25	\$25.30 ♥

Sterile Transfer Cap Assembly for 20L Nalgene Carboy

The venting port ends in a 50mm diameter vent filter with a 0.20µm pore PTFE (hydrophobic) membrane and barbed fitting. On the external side you will find 1/2" ID x 3/4" OD, weldable, size 82, C-Flex® tubing with a tubing clamp and a 1/2" end tube plug. The liquid transfer port has an internal end with a rigid 1/2" x 3/4" OD size 82 C-Flex® dip tube to reach the bottom of the carboy. Individually double bagged and gamma irradiated sterile.

Transfer Assembly for 20L Nalgene Carboy, Sterile

Part No.	Description	Qty.	Price
CLS-3465-20LC	Plugged End and Weldable C-Flex Tubing	1	Call ♥



Other Transfer Assemblies with Nalgene 83B Caps are also available.

Single-Use Bioreactor Accessory Kits Ready for Sterilization

Single Use

- Minimize labor costs
- Eliminates cleaning validation
- Reduces set up time and costs

Pre-Fabricated Assemblies

- Minimize injuries associated with cutting in-house
- Improved consistency

Offers Closed System

- Gives the ability to assemble in open lab type environment
- Provides aseptic solution to close off an unused line

How to Sterilize

- Autoclave max 15 psi @ 134°C, 60 min
- Gamma radiation 25 kGy to 50 kGy

Bioreactor Accessory Kit, Single-Use, Non-Sterile

Part No.	Description	Qty.	Price
CLS-1390-01	Bioreactor Accessory Kit Complete	1	\$293.65 ♥



CLS-1390-01

**Custom Kits
and Large
Volume
Discounts
Available**

DISCOUNTS: * Not Subject to Discount ♥ Bioreactor Reactor ♣ Celltreat / Consumable LM Products ◇ Life Sciences Consumables.

Platinum-Cured Silicone Tubing, Medical Grade SILCON® MED-X

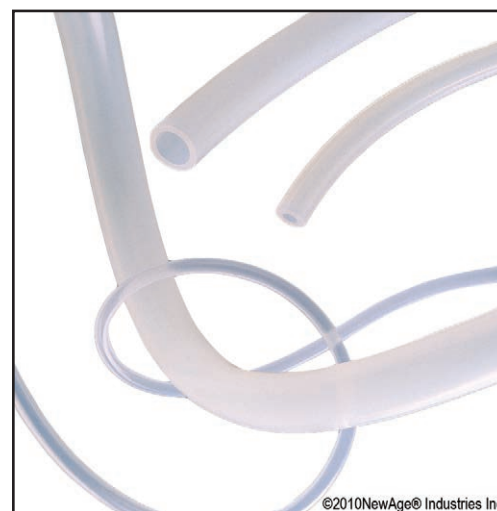
- Platinum cured for the highest degree of purity (least extractables)
- Reusable — will withstand repeated sterilization[^]
- Translucent natural color for visual contact with the flow
- Free of BPA, latex and phthalates
- RoHS compliant

SILCON MED-X tubing is made under good manufacturing procedures and conforms to the biocompatibility requirements of USP Class VI. SILCON MED-X's surface properties resist sticking and encrustation and will not support bacteria growth. The tubing is soft, pliable, and contains no plasticizers which could leach out, causing flow contamination or tube hardening. Care is recommended in the selection and application of fittings and clamps as sharp barbed fittings or unlined metal clamps could tear into the wall.

Exposed to repeated steam sterilization, long-term high temperature or pressure, silicone will eventually relax and become gummy. It should then be replaced.

Platinum-Cured Silicone Tubing, Silcon® MED-X

Part No.	OD (in.)	ID (in.)	Wall Thick (in.)	Roll Length (ft.)	Price
CLS-1436-P01	3/16	1/16	1/16	50	\$75.10 ◇
CLS-1436-P02	1/4	1/8	1/16	50	\$73.90 ◇
CLS-1436-P03	5/16	1/4	3/32	50	\$166.50 ◇
CLS-1436-P04	5/16	3/16	1/16	50	\$94.95 ◇
CLS-1436-P05	3/8	3/16	3/32	50	\$100.05 ◇
CLS-1436-P06	3/8	1/4	1/16	50	\$97.15 ◇
CLS-1436-P07	7/16	1/4	3/32	50	\$181.30 ◇
CLS-1436-P08	1/2	1/4	1/8	50	\$229.65 ◇



CLS-1436-P-series

SILCON MED-X is supplied in individual, heat-sealed polybags and should be sterilized prior to use.

SILCON MED-X is not recommended for implantable or in-body uses or for continuous steam applications.

Other sizes and 60A durometer material are also available, contact us for details.

Versilic™, Peroxide-cured, Silicone Tubing in Rolls

Peroxide-cured Versilic Silicone Tubing is designed for applications where flexibility, resiliency and durability are required. Its inner smooth surface reduces the risk of particulate entrapment and microscopic buildup during fluid transfer.

Tubing complies fully with the requirements of the USP Class VI Criteria and is entirely non-toxic, non-hemolytic and non-pyrogenic. It also meets 3-A Sanitary Standards, FDA 21 CFR Part 177.2600 Criteria and NSF 51 Standard. Withstands temperature extremes from -75°F to 350°F.

Sold in standard lengths of 50ft.

Peroxide-cured, Silicone Tubing in Rolls, Versilic™

Part No.	OD (in.)	ID (in.)	Wall Thick (in.)	Roll Length (ft.)	Price
CLS-1436-T20	1/4	1/8	1/16	50	\$54.05 ◇
CLS-1436-T21	5/16	3/16	1/16	50	\$61.25 ◇
CLS-1436-T22	3/8	3/16	3/32	50	\$85.75 ◇
CLS-1436-T23	3/8	1/4	1/16	50	\$72.05 ◇
CLS-1436-T24	7/16	1/4	3/32	50	\$92.40 ◇
CLS-1436-T25	1/2	1/4	1/8	50	\$146.45 ◇



CLS-1436-T-series



CLS-1399-F50



CLS-1399-G50



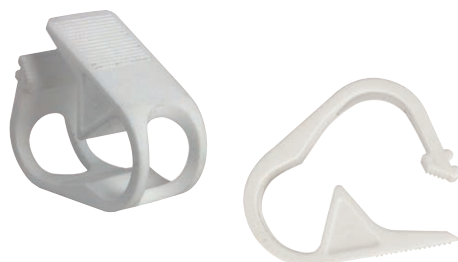
CLS-1399-F55



CLS-1436-C01



CLS-1436-SP4



CLS-1436-SP5

Male Luer Lock, Needleless Injection Site, Swabable, Polycarbonate, Silicone, Bioreactors

Male Luer Locks

Part No.	Description	Qty.	Price
CLS-1399-F50	Male Luer Lock, Needleless Injection Site, Swabable, Polycarbonate, Silicone	25	\$67.75 ♥

Female Luer, 1/8" Barb

The Female Luer thread style to 1/8" barb (3.2mm) ID Tubing is gamma stable and polycarbonate. Ideal for use with CLS-1399-F50.

Female Luer to 1/8" Barb

Part No.	Description	Qty.	Price
CLS-1399-G50	Female Luer, 1/8" barb, PC	25	\$13.75 ◇

Female to Male Luer Lock, Polycarbonate, Bioreactors

Female to Male Luer Locks

Part No.	Description	Qty.	Price
CLS-1399-F55	Female to Male Luer Lock, Polycarbonate	25	\$47.20 ♥

Flow Control Tube Clamps, 0.45" OD

Acetal clamp is autoclavable; won't rust, corrode or distort. Twelve-position ratchet control adjusts from full flow to complete closure.

Flow Control Tube Clamps

Part No.	Accepts Tubing OD Up to (in.)	Qty.	Price
CLS-1436-C01	0.45	5	\$9.75 ◇
CLS-1436-C02	0.45	25	\$36.30 ◇

Single Position Tubing Clamp for 0.25" OD Tubing

Plastic clamp is manufactured from blue polypropylene and is both autoclavable and gamma stable. Clamp is designed for on/off control of fluid or air. One-hand control and economically priced for disposable applications. Packed 25 per Case.

Tubing Clamps

Part No.	Description	Qty.	Price
CLS-1436-SP4	Tubing Clamp, 1/4" OD, Single Position	25	\$30.35 ◇

Single Position Tubing Clamp for 0.50" OD Tubing

Plastic clamp is manufactured from white polypropylene and is both autoclavable and gamma stable. Clamp is designed for on/off control of fluid or air. One-hand control and economically priced for disposable applications. Packed 25 per Case.

Tubing Clamps

Part No.	Description	Qty.	Price
CLS-1436-SP5	Tubing Clamp, 1/2" OD, Single Position	25	\$40.50 ◇

DISCOUNTS: * Not Subject to Discount ♥ Bioreactor Reactor ♣ Celltreat / Consumable LM Products ◇ Life Sciences Consumables.

Reusable PTFE Vent Filters, 50mm, Non-Sterile, Autoclavable

- 56mm OD PP outer housing with 6-10mm stepped hose barb connections
- 0.2 micron PTFE filter membrane

Designed for bi-directional flow, these filters serve as cost-effective hydrophobic vents for contamination-sensitive materials and as protection from hazardous aerosols. Also used for laboratory vacuum pump protection. **Safely autoclave up to 30 times for sterile applications.**

PTFE Vent Filters, Non-Sterile

Part No.	Membrane (µm)	Filter Dia. (mm)	Qty.	Price
CLS-1397-050A	0.2	50	10	\$213.90 ♥

PTFE Vent Filters, 50mm, Non-Sterile

- 60mm OD PP outer housing with 6-12mm stepped hose barb connections
- 0.2 micron PTFE filter membrane

Designed for bi-directional flow, they serve as a cost-effective hydrophobic vent for laboratory applications. **Autoclave up to 3 times for standard sterile applications.**

PTFE Vent Filters, Non-Sterile

Part No.	Membrane (µm)	Filter Dia. (mm)	Qty.	Price
CLS-1397-050B	0.2	50	10	\$77.80 ♥

Individually Bagged Caps, Sterile

Part No.	Cap Size	Qty.	Price
CLS-1168-1038	38-430	20	\$55.00 *
CLS-1168-1053	53B	20	\$66.00 *

Open Top, Polypropylene Caps, Individually Bagged, Sterile

Open Top Caps are manufactured with Class VI Polypropylene. The caps are supplied individually bagged and Gamma Sterilized.

Open Top PP Caps, Individually Bagged, Sterile

Part No.	GPI Cap Size	Qty.	Price
CLS-1168-1138	38-430	20	\$60.50 *
CLS-1168-1153	53B	20	\$71.50 *

Multipurpose vent filters are for small-volume gas venting and solvent filtration. Each is identified with part number and heat-stamped lot number.



CLS-1397-050A



CLS-1397-050B



CLS-1168-1038
CLS-1168-1053



CLS-1168-1138
CLS-1168-1153



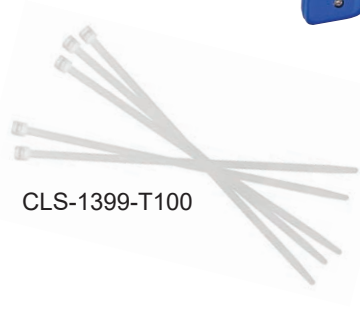
CLS-1399-G100

Cable Tie Gun, Plastic, Adjustable Tension, Zip-Tie

Plastic gun works with cable ties up to 0.19" wide and produces 18-50lbs of tensile strength. Gun tightens and cuts. Not compatible with stainless steel ties.

Adjustable Tension, Cable Tie Gun

Part Number	Description	Qty.	Price
CLS-1399-G100	Cable Tie Gun, Plastic, Adjustable Tension	1	\$31.35 ♥



CLS-1399-T100

Cable Ties, 4-inch Length, Nylon 6.6, Autoclavable

Tie wraps are injection-molded of 6.6 nylon and won't corrode or stretch. Durable locking mechanism holds securely. Each natural-color, 4-inch tie is 1/8" wide and has an 18lb strength. Maximum bundle / wrap diameter is 1-inch. Long term temperature range is -40 to 85°C. Short term temperature range is 180°C. Autoclavable.

Nylon Cable Ties, 4-inch

Part Number	Description	Qty.	Price
CLS-1399-T100	Cable Tie, 4" Long, Nylon 6.6, Natural	100	\$5.00 ♥



CG-1975-30

Tubing Cutters

For cutting tubing made from plastic, FEP, PTFE, polyethylene, polypropylene, or rubber.

Tubing Cutter

Part No.	Description	Qty.	Price
CG-1975-30	Tubing Cutter	1	\$14.85 *



CG-1997-R-10

Mobile Spool Rack

Rack is on casters making it easy to move from lab to lab. It will hold up to 6 each 13" spools. With the rack being only 17" wide it can fit into tight spaces between lab benches and hoods. Constructed of powder coated aluminum making the unit light and resistant to most lab environments.

Mobile Spool Rack

Part No.	Dimensions L x W x H (in.)	Qty.	Price
CG-1997-R-10	35 x 17 x 52	1	\$2,529.50 *

Single-Use Bioprocess Tubing Assemblies to Your Custom Specifications - 3 Easy Steps

1 DESIGN YOUR ASSEMBLY

Technical specialists work with you to create/design the assembly and provide recommendations on tubing, fittings, quick connects and filter components.

2 QUOTATION and 2D or 3D DRAWING

Fast turnaround on your quotation and drawing of your assembly. The drawing will include details and a subcomponent bill of materials.

3 DELIVERY – SINGLE ORDERS or BLANKET ORDERS

We work with you to meet your deliver needs on single orders or blanket delivery scheduling. Chemglass stocks many fluid handing components such as tubing, fittings, quick connects and filters so they are available when needed.

Let's discuss your custom specifications.

1.800.843.1794

singleuse@cglifesciences.com

ITEM NO.	PART NUMBER	DESCRIPTION	QTY.
1	222222	Y CONNECTOR, NATURAL	
2	333333	MALE LUER LOCK BARB, TUBING, PP	
3	444444	PUMP TUBING SILICON PLATINUM CURED	
4	555555	CABLE TIE	

BarbLock® Ultra-Secure Retainers Available on Custom Assemblies

BioSciences

EXCLUSIVELY THROUGH CHEMGLASS LIFE SCIENCES

MPC Series Couplings add ease of use and security to your most critical fluid handling applications. Choose from a full line of connectors and configurations, including pressure sealing caps and plugs, in sizes to fit 1/8", 1/4" and 3/8" tubing. MPC couplings offer optional locking sleeves to further guard against accidental disconnects. In addition, coupling halves can be rotated when connected to reduce tube kinks.

CPC Coupling Bodies with Hose Barbs, Non-Valved, In-Line, Non-Sterile

Ergonomic thumb latch	Easy to operate – even with gloved hands
USP Class VI materials	Meet biocompatibility requirements
Supplied Non-Sterile	Sterilizable by autoclave, EtO, e-beam or gamma radiation
Parting line-free hose barb	Eliminates potential leak path
Meet ADCF requirements	BSE-, TSE-free materials



CL-91402-003



CL-91404-039



CL-91406-003

CPC MPC Coupling Body with 1/8" Hose Barb, Non-Valved, In-Line, Non-Sterile

Part No.	CPC Part No.	Material	Qty.	Price
CL-91402-003	MPC17002T03	polycarbonate	50	\$240.75 *
CL-91402-039	MPC17002T39	polysulfone	50	\$399.70 *

CPC MPC Coupling Body with 1/4" Hose Barb, Non-Valved, In-Line, Non-Sterile

Part No.	CPC Part No.	Material	Qty.	Price
CL-91404-003	MPC17004T03	polycarbonate	50	\$176.40 *
CL-91404-039	MPC17004T39	polysulfone	50	\$302.25 *

CPC MPC Coupling Body with 3/8" Hose Barb, Non-Valved, In-Line, Non-Sterile

Part No.	CPC Part No.	Material	Qty.	Price
CL-91406-003	MPC17006T03	polycarbonate	50	\$176.40 *
CL-91406-039	MPC17006T39	polysulfone	50	\$302.25 *

CPC Back-to-Back Body Adapter, Non-Sterile

Ergonomic thumb latch	Easy to operate – even with gloved hands
USP Class VI materials	Meet biocompatibility requirements
Supplied Non-Sterile	Sterilizable by autoclave, EtO, e-beam or gamma radiation
Parting line-free hose barb	Eliminates potential leak path
Meet ADCF requirements	BSE-, TSE-free materials

CPC Back-to-Back Body Adapter, MPC x MPC, Non-Sterile

Part No.	CPC Part No.	Material	Qty.	Price
CLS-91407-003	MPC17C1703	polycarbonate	25	\$186.65 *
CLS-91407-039	MPC17C1739	polysulfone	25	\$291.85 *

CPC Back-to-Back Body Adapter, MPC x MPX, Non-Sterile

Part No.	CPC Part No.	Material	Qty.	Price
CLS-91408-003	MPC17X1703	polycarbonate	25	\$320.65 *
CLS-91408-039	MPC17X1739	polysulfone	25	\$457.20 *

CPC MPC Coupling Insert with Hose Barb, Non-Valved, Class VI Polycarbonate, Non-Sterile

Ergonomic thumb latch	Easy to operate – even with gloved hands
USP Class VI materials	Meet biocompatibility requirements
Supplied Non-Sterile	Sterilizable by autoclave, EtO, e-beam or gamma radiation
Parting line-free hose barb	Eliminates potential leak path
BSE-, TSE-free materials	Meet ADCF requirements

Reusable, yet economical enough to allow disposability.

CPC MPC Coupling Insert with Hose Barb, Non-Valved, Class VI Polycarbonate, Non-Sterile

Part No.	CPC Part No.	Material	Qty.	Price
CLS-91409-003	MPC22002T03	polycarbonate	50	\$159.65 *

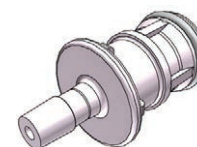
MPC Series Couplings add ease of use and security to your most critical fluid handling applications. Choose from a full line of connectors and configurations, including pressure sealing caps and plugs, in sizes to fit 1/8", 1/4" and 3/8" tubing. MPC couplings offer optional locking sleeves to further guard against accidental disconnects. In addition, coupling halves can be rotated when connected to reduce tube kinks.



CLS-91407-series



CLS-91408-series



CLS-91409-003

CPC MPC Coupling Inserts with Hose Barbs, Non-Valved, In-Line, Non-Sterile

Ergonomic thumb latch	Easy to operate – even with gloved hands
USP Class VI materials	Meet biocompatibility requirements
Supplied Non-Sterile	Sterilizable by autoclave, EtO, e-beam or gamma radiation
Parting line-free hose barb	Eliminates potential leak path
Meet ADCF requirements	BSE-, TSE-free materials

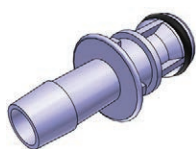
Reusable, yet economical enough to allow disposability.

CPC MPC Coupling Insert with 1/8" Hose Barb, Non-Valved, In-Line, Non-Sterile



CLS-91410-003

Part No.	CPC Part No.	Material	Qty.	Price
CLS-91410-003	MPC22002T03M	polycarbonate	50	\$240.75 *
CLS-91410-039	MPC22002T39M	polysulfone	50	\$391.15 *



CLS-91411-003

CPC MPC Coupling Insert with 1/4" Hose Barb, Non-Valved, Non-Sterile

Part No.	CPC Part No.	Material	O-Ring Seal	Qty.	Price
CLS-91316-004	MPC22004T03M	polycarbonate	Silicone, platinum-cured	50	\$95.20 *
CLS-91411-003	MPC22004T03	polycarbonate	Buna-N USP Class V	50	\$109.90 *
CLS-91411-39M	MPC22004T39M	polysulfone	Silicone USP Class VI	50	\$294.90 *



CLS-91412-003



CLS-91412-03M



CLS-91412-39M

CPC MPC Coupling Insert with 3/8" Hose Barb, Non-Valved, Non-Sterile

Part No.	CPC Part No.	Material	O-Ring Seal	Qty.	Price
CLS-91412-003	MPC22006T03	polycarbonate	Buna-N USP Class V	50	\$109.90 *
CLS-91412-03M	MPC22006T03M	polycarbonate	Silicone, platinum-cured USP Class VI, ADCF	50	\$176.40 *
CLS-91412-39M	MPC22006T39M	polysulfone	Silicone, platinum-cured USP Class VI, ADCF	50	\$294.85 *

DISCOUNTS: * Not Subject to Discount ♥ Bioreactor Reactor ♣ Celltreat / Consumable LM Products ◇ Life Sciences Consumables.

CPC ASEPTIQUIK® S Series Connectors, Non-Sterile

Genderless design	Eases integration of single-use systems with one part number for both halves
Robust construction	Repeatable and reliable performance with no additional hardware required
FLIP-CLICK-PULL	Innovative three-step connection process reduces risk of operator error
Integrated pull tab	Connectors have an integrated pull tab that acts as a protective cover reducing part complexity and ensures simultaneous removal of both membranes
CPC “Click”	Audible confirmation of assembly

Specifications	Material	Polycarbonate, USP Class VI, ADCF
	Material Finish	Molded White
	Pressure Range	Up to 60 psi, 4.1 bar
	Color	White with blue tab covers
	Mounting Option	Free Floating
	Supplied Non-Sterile	Autoclave and Gamma Radiation Compatible
	Temperature Range	39 - 104°F (4 - 40°C)
	Seal Options	Silicone, Platinum-cured, USP Class VI, ADCF
	Valve Option	Non-Valved

CPC ASEPTIQUIK® S Series Genderless Connectors, Non-Sterile (Gamma Radiation Only)

Part No.	CPC Part No.	Hose Barb (in.)	Pack Qty.	Price
CLS-91309-002	AQS17002	1/8	5	\$238.40 *
CLS-91309-004	AQS17004	1/4	5	\$238.40 *
CLS-91311-012	AQS33012	3/4 sanitary	5	\$249.15 *

CPC ASEPTIQUIK® S Series High Temperature Genderless Connectors, Non-Sterile (Autoclave and Gamma Radiation Compatible)

Part No.	CPC Part No.	Hose Barb (in.)	Pack Qty.	Price
CLS-91309-002HT	AQS17002HT	1/8	5	\$297.80 *
CLS-91309-004HT	AQS17004HT	1/4	5	\$297.80 *
CLS-91311-012HT	AQS33012HT	3/4 sanitary	5	\$308.85 *

*Life Sciences Equipment Product Line



ASEPTIQUIK® S Series Genderless Connectors



ASEPTIQUIK® S Series High Temperature Genderless Connectors

MPC to MPC Back-to-Back Insert Adapter

Part No.	CPC Part No.	Qty.	Price
CLS-91413-03C	MPC22C2239M	25	\$293.85 *



CLS-91413-03C

CPC ASEPTIQUIK® G Series Connectors, Non-Sterile

- Genderless design** Eases integration of single-use systems with one part number for both halves
- Robust construction** Repeatable and reliable performance with no additional hardware required
- FLIP-CLICK-PULL** Innovative three-step connection process reduces risk of operator error
- Integrated pull tab** Connectors have an integrated pull tab that acts as a protective cover reducing part complexity and ensures simultaneous removal of both membranes
- CPC “Click”** Audible confirmation of assembly

Specifications	Material	Polycarbonate, USP Class VI, ADCF
	Material Finish	Molded White
	Pressure Range	Up to 60 psi, 4.1 bar for 30 days; Up to 75 psi, 5.1 bar for 48 hours
	Color	White with blue pull tab
	Mounting Option	Free Floating
	Supplied Non-Sterile	Gamma Radiation Compatible
	Temperature Range	34 - 104°F (1 - 40°C)
	Seal Options	Silicone, Platinum-cured, USP Class VI, ADCF
	Valve Option	Non-Valved

CPC ASEPTIQUIK® G Series Genderless Connectors, Non-Sterile (Gamma Radiation Only)

Part No.	CPC Part No.	Hose Barb (in.)	Pack Qty.	Price
CLS-91305-004	AQG17004	1/4	5	\$293.75 *
CLS-91305-006	AQG17006	3/8	5	\$293.75 *
CLS-91305-008	AQG17008	1/2	5	\$293.75 *
CLS-91305-012	AQG17012	3/4	5	\$305.05 *
CLS-91307-012	AQG33012	3/4 sanitary	5	\$330.15 *
CLS-91307-024	AQG33024	1½ sanitary	5	\$371.30 *

*Life Sciences Equipment Product Line



ASEPTIQUIK® G Series Connectors

Flip, Click and Pull
Assembly Procedure

FLIP

Unsnap and flip down the protective pull tab covers on each connector half.



CLICK

Align connector halves with pull tabs hanging down. Slide halves together. Independently squeeze each side of connector until you hear an audible “click.”



PULL

To complete the connection, simply snap the pull tabs together by pushing on the CPC logos and pull the membranes from the connector.



CPC ASEPTIQUIK® C Series Connectors, Non-Sterile

CLICK-PULL-TWIST Design	Intuitive three-step connection process reduces risk of operator error
Membrane pull tabs	Ensure simultaneous and secure removal of both membranes
Robust construction	Repeatable and reliable performance with no additional hardware required
Integrated lock ring	Secures final connection preventing disassembly
CPC “Click”	Audible confirmation of completed assembly steps

Specifications	Material	Polycarbonate, USP Class VI, ADCF
	Material Finish	Molded White
	Pressure Range	Up to 60 psi, 4.1 bar
	Color	White with blue pull tab
	Mounting Option	Free Floating
	Supplied Non-Sterile	Gamma Radiation Compatible
	Temperature Range	39 - 104°F (4 - 40°C)
	Seal Options	Silicone, Platinum-cured, USP Class VI, ADCF
	Valve Option	Non-Valved

CPC ASEPTIQUIK® C Series Connectors, Non-Sterile (Gamma Radiation Only)

Part No.	CPC Part No.	Desc.	Hose Barb (in.)	Pack Qty.	Price
CLS-91300-006	AQC17006	body	3/8	5	\$355.40 *
CLS-91300-008	AQC17008	body	1/2	5	\$355.40 *
CLS-91303-006	AQC22006	insert	3/8	5	\$372.40 *
CLS-91303-008	AQC22008	insert	1/2	5	\$372.35 *



ASEPTIQUIK® C Series
Connector Body
CLS-91300-series



ASEPTIQUIK® C Series
Connector Insert
CLS-91303-series

Click, Pull and Twist Assembly Procedure

CLICK

Align male and female couplings; push until “click” is heard. Slight rotation of lock ring may be required for proper alignment prior to connection.



PULL

Snap membrane pull tabs together and pull from connector.



TWIST

Twist the blue lock ring clockwise until “click” and rib to arrow alignment confirms secure final connection.





ASEPTIQUIK® X Large Format
Connector Body
CLS-91313-012



ASEPTIQUIK® X Large Format
Connector Insert
CLS-91314-012

ASEPTIQUIK® X Large Format 1" Connectors, Non-Sterile

TWIST-PULL-TWIST	Design Intuitive three-step connection process reduces risk of operator error
Membrane pull tabs	Ensure simultaneous and secure removal of both membranes
Robust construction	Repeatable and reliable performance with no additional hardware required
Integrated lock ring	Secures final connection preventing disassembly
CPC Click Audible	Confirmation of completed assembly steps

Specifications	Material	Polycarbonate, USP Class VI, ADCF
	Material Finish	Molded White
	Pressure Range	Up to 60 psi, 4.1 bar
	Color	White with blue pull tab
	Mounting Option	Free Floating
	Supplied Non-Sterile	Gamma Radiation Compatible
	Temperature Range	39 - 104°F (4 - 40°C)
	Seal Options	Silicone, Platinum-cured, USP Class VI, ADCF
	Valve Option	Non-Valved

AseptiQuik® X Large Format 1" Connectors, Non-Sterile (Gamma Radiation Only)

Part No.	CPC Part No.	Desc.	Hose Barb (in.)	Pack Qty.	Price
CLS-91313-012	AQX17012	body	3/4	1	\$139.10 *
CLS-91314-012	AQX22012	insert	3/4	1	\$208.60 *

Non-Valved Coupling Insert, Non-Sterile

Specifications	Material	Polycarbonate, USP Class VI, ADCF
	Material Finish	Natural
	Pressure Range	Up to 60 psi, 4.1 bar
	Color	Purple Tint
	Mounting Option	Free Floating
	Supplied Non-Sterile	Autoclave and Gamma Radiation Compatible
	Temperature Range	-40 - 250°F (-40 - 121°C)
	Seal Options	Silicone, Platinum-cured, USP Class VI, ADCF
	Valve Option	Non-Valved

Non-Valved Coupling Insert, Non-Sterile (Autoclave and Gamma Radiation Compatible)

Part No.	CPC Part No.	Hose Barb (in.)	Pack Qty.	Price
CLS-91316-004	MPC22004T03M	1/4	50	\$95.20 *



CLS-91316-004

DISCOUNTS: * Not Subject to Discount ♥ Bioreactor Reactor ♣ Celltreat / Consumable LM Products ◇ Life Sciences Consumables.

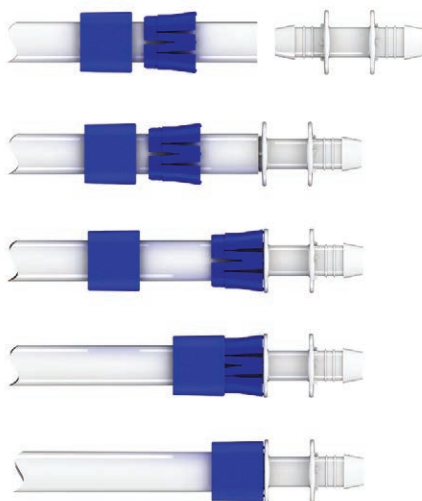
BarbLock® Ultra-Secure Retainer System

- Replaces inconsistent and leak-prone cable ties and traditional clamps
- Compatible with all flexible tubing materials
- Provides 360° radial crimp behind the barb
- Supplies 360° compression over the barb and full dynamic retention
- Eliminates solvent bonding, ultraviolet bonding and toxic adhesives
- Constructed with USP Class VI materials

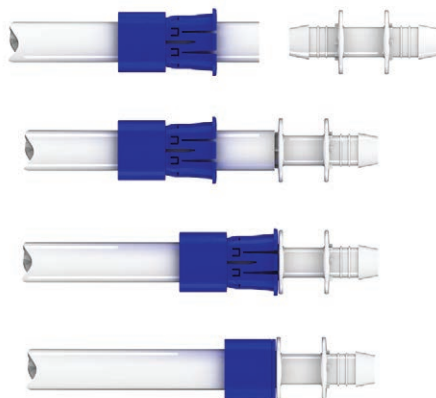
BarbLock® Ultra-Secure Retainers are the most advanced design available in today's demanding connective applications. When it comes to retaining flexible tubing and hose onto barbed fittings, BarbLock retainers are the only system with a full 360° radial crimp behind the barb and 360° of compression directly over the barb's ridge. BarbLock retainers have become the standard in many industries, including biopharmaceutical, medical and laboratory, because they solve inherent leak path problems in sensitive and demanding applications. The retainer uses no adhesives or solvents, is ideal for systems transferring delicate liquids or gases, and is quick and easy to assemble, saving valuable time.

Retainer Assembly

Standard Two-Piece



AL Series One-Piece



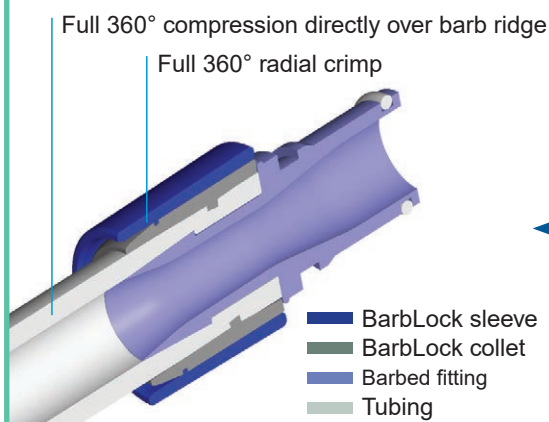
BarbLock Retainers available on Custom Tubing Assemblies

Quick and easy to assemble with a full 360° radial crimp behind the barb and 360° of compression directly over the barb's ridge.

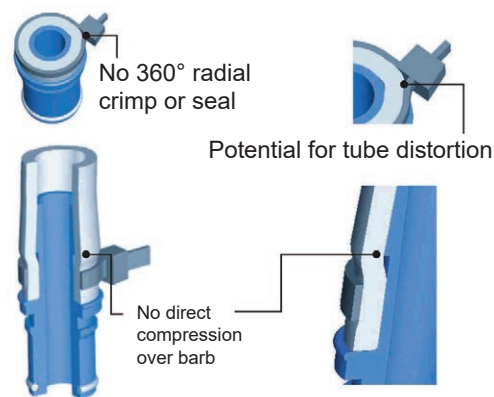
Typical Applications

- Biopharmaceutical transport systems
- Flexible tubing and hose retainers
- Disposable assemblies
- Medical equipment and apparatus
- Quick connects

Contact Us for More Information on Custom Assemblies Using BarbLock Retainers



BarbLock
VS.
Cable Tie



Single-Use Bioprocess Tubing Assemblies to Your Custom Specifications

See page 23 for details.



ISO Class 7 Cleanroom



Chemglass Life Sciences supports your bioprocess with standard and custom single-use products through CG BioSciences.



T 1.800.843.1794

F 1.800.922.4361

www.cglifesciences.com

For custom quotes and inquiries contact
singleuse@cglifesciences.com

CG-23029BC2m623 ©2023 Chemglass Life Sciences.

Printed in USA. Trademarks are the property of their respective owners.
Prices subject to change without notice.

